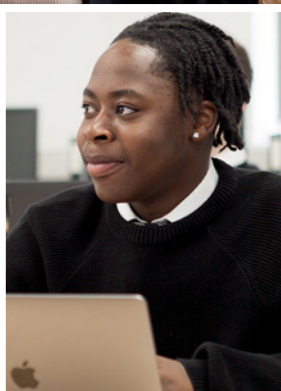
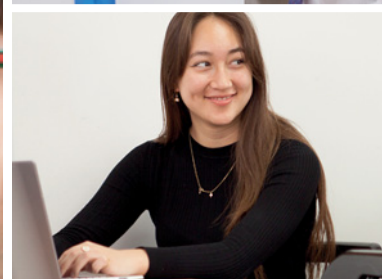


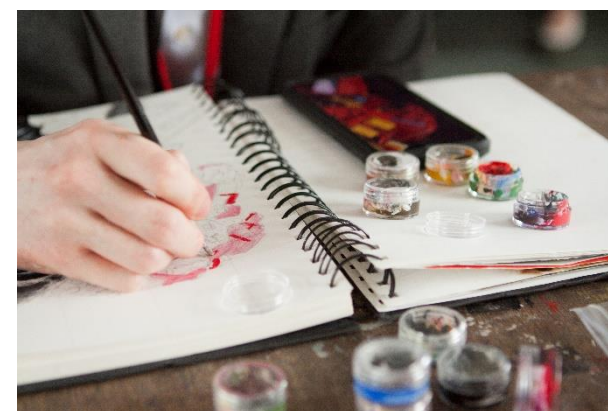
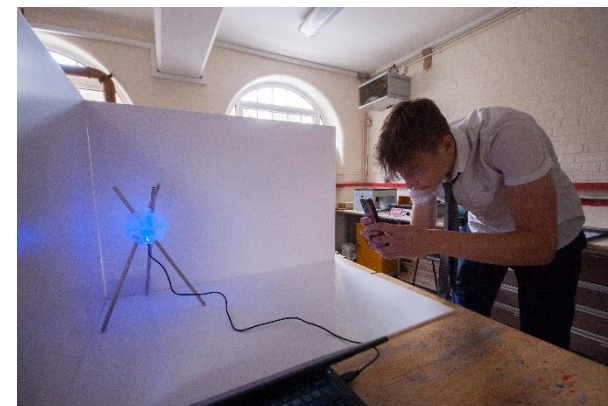
HITCHIN SIXTH FORM CONSORTIUM

Prospectus 2023-2025



CONTENTS

	Page		
Foreword	1	Investigative & Forensic Science	27
Introduction	2-3	Latin	28
Courses		Mathematics & Further Maths	29
Art & Design	4	Media Studies	30
Biology	5	Music	31
Business	6-7	Music Technology	32-33
Chemistry	8	Performing Arts	34
Classical Civilisation	9	Philosophy & Ethics	35
Computer Science	10	Photography	36
Criminology	11	Physical Education	37
Digital Media	12	Physics	38
Drama & Theatre	13	Politics	39
Economics	14	Product Design	40
English	15-16	Psychology	41
Fashion & Textiles	17	Sociology	42
Film Studies	18	Spanish	43
Food Science & Nutrition	19	Sport	44
Forensic & Criminal Investigation	20	Travel & Tourism	45
French	21	Enrichment	
Geography	22	Core Maths	46
German	23	Extended Project Qualification	47
Health & Social Care	24	Sports Leaders	48
History	25	Delivery of Courses	49
ICT	26	Entry Requirements	50-51
		Contact Details	52



FOREWORD

We are pleased that you are considering remaining in full-time education and doing so in the Hitchin Sixth Form Consortium. It is a Consortium of Hitchin Boys' School, Hitchin Girls' School and The Priory School. Whether you are continuing with us from Y11, or joining from another school, you will have access to, and benefit from, academic and pastoral support, an integrated enrichment programme and a wide range of extra-curricular activities.

Being part of a school Sixth Form is more than studying for qualifications. There are significant contributions you can make as a sixth form student to your school and the Consortium in a whole variety of ways e.g. mentoring younger students or taking part in our ambassador programme. These in turn will be of further benefit to you when you move on to higher education or employment.

The Consortium has existed for many years and we constantly review what we offer and seek ways of improving still further the opportunities for post-16 students. By working closely and creatively together we are able to continue to expand our offer of a wide range of A level, L3 BTEC and L3 Technical qualifications.

Each of the schools in the Consortium has excellent arrangements in place to guide you in making your choices. We will provide advice, designed to offer you the most appropriate programme. After reading this prospectus carefully do talk to your teachers, Heads of Year, Heads of Sixth Form, Careers Advisers and students already following the courses in which you are interested. You will then be able to make your choices from an informed position.

In the meantime we wish you every success in your studies.



F. Moane
Head Teacher
Hitchin Boys' School



G. Edwards
Head Teacher
The Priory School



J. Crowther
Head Teacher
Hitchin Girls' School



INTRODUCTION

Welcome to the Hitchin Sixth Form Consortium Prospectus for the period September 2023 to July 2025. We hope that you find the information contained in it useful. Further information is available from the Head of Sixth Form at each of the schools and on each school website. The three Hitchin secondary schools, Hitchin Boys', Hitchin Girls' and The Priory are working together as a Sixth Form Consortium to enable over 800 students to have access to a wide range of academic and vocational courses.

Consortium Aims and Objectives

- To offer learning environments where you feel safe, valued and informed.
- To meet the needs of all students through a high quality provision of appropriate learning and enrichment opportunities.
- To provide clear progression opportunities along relevant and flexible pathways.
- To ensure you receive comprehensive and impartial advice and guidance in order to achieve your full potential.
- To give you the opportunity to develop the knowledge, skills and confidence to set yourself demanding targets and the determination to achieve them.
- To provide you with a platform from which you can progress to employment or to higher or further education.

- To provide best value through effective deployment of resources and specialist staff

Entry to the Sixth Form

You are encouraged to move on to the Sixth Form provided that you are capable of benefiting from the courses which are available and that you have a positive approach to your work. The level of course you could progress onto will depend on the results you achieve at Key Stage 4. Standard entry requirement to our Consortium is five Grade 9 – 4 GCSEs or equivalent, including a grade 4 or above in both Maths and English. Most subjects will have additional entry requirements and all have a recommended GCSE Average Points Score (APS) as detailed in the Entry Requirements table. You must be under 18 on 31st August 2023 to join the Sixth Form.

After the Open Evening you will be asked to complete a registration form indicating the courses which you would like to take in the Sixth Form. These choices will be discussed with you in individual meetings and induction sessions will be held in each school. Taster lessons in each subject will be offered across the Consortium during a designated period in the second half of the summer term.

Advice and Guidance

Impartial advice and guidance regarding options after Key Stage 4 is available for you from a variety of sources including subject teachers, Year Heads, Careers Co-ordinators, Heads of Sixth Form and Head Teachers. Career advisers are available in school on a regular basis.

In the Sixth Form you will be assigned to a tutor and a tutor group for the whole of your Sixth Form course. The tutor, supported by your Head of Sixth, is responsible for your academic guidance and pastoral care. Careers education and guidance is an integral part of the Sixth Form programme with the aim of helping you to make informed, appropriate choices about your future.

You will receive advice and assistance from nominated personnel at each school when making applications to university or college, and for apprenticeships and work experience. There is an integrated reference process for UCAS applications between the three schools, via the Unifrog programme. Where talks and presentations are made from industry representatives, we aim to make these accessible to students across the Consortium wherever possible.

Life in the Sixth Form

The Sixth Form provides a series of opportunities for you to develop not only your academic and vocational attainments but also your self-confidence and skills such as communication, team working and management of your own learning. You will be encouraged to take more responsibility for your work, particularly with regard to its planning and completion, the preparation required for lessons and the amount of reading needed to gain the necessary depth and breadth of knowledge in each subject. With more lessons in each subject than at Key Stage 4, there is more chance to develop a closer contact with teachers and receive more individual attention.

You will have a number of private study or assisted learning periods during each week. You will be expected to use this time constructively either on further study, research or wider reading. For each hour of taught lessons in school, you will need to spend upwards of one hour on independent study in order to achieve your full potential. There is a wide range of extra-curricular and enrichment activities for you to continue to develop your own skills and abilities and increase your range of interests. There are also opportunities for you to assist with the running of activities for other students in your school and to participate in sport, music and drama. It is to be hoped that you will take up some of the opportunities available.

The important factor overall is to maintain a good balance between the demands of academic work and all the other demands on your time.

How the Consortium Operates

Each school offers a range of Sixth Form courses with the opportunity to take courses at other schools within the Consortium. Generally, it will be possible to accommodate you on the courses of your choice, however, where demand dictates, the following criteria will apply:

1. Some courses are joint-taught across two or more schools. Students from all three schools have equal right of access to these courses.
2. Some courses are only delivered at one or two of the three schools. Places on these courses will be given to students from the other schools once the demand for places in the host school has been assessed.
3. In some cases it is difficult to timetable all the subjects which you would like to take without there being a timetable clash. Most often in this situation it will be possible for you to take a subject at one of the other schools to resolve the clash.
4. Please note that in cases where only a small number of students choose a particular course it may not be possible to run it.

You must negotiate your courses with your own Head of Sixth Form. Students from outside the area wishing to be taught within the Consortium need first to apply to the Sixth Form in one of the schools. Transport is provided at certain times during the school day to move students between sites, where required, for consortium lessons. You are expected to make your own way to and from your teaching site at the beginning and end of the day.

The Sixth Form Curriculum

Students joining the Sixth Form are encouraged to follow a broad, challenging curriculum. Most students will select three courses for their studies from the wide range of different A level or Vocational courses available within the Consortium.

All of the A level courses are linear, with assessment by examination taking place at the end of two years of study. These courses are graded on a six point scale with pass grades from A* to E.

Most of the vocational courses offered are equivalent to one A level. BTEC Business is also available as a double award, equivalent to two A levels. These courses are graded as Pass, Merit, Distinction or Distinction* and are assessed through assignments, both internally & externally marked, and examinations.

ART & DESIGN – A LEVEL

Taught At

Hitchin Boys' School, Hitchin Girls' School and The Priory School

Course Overview

This course will enable you to develop the creative and intellectual skills for imaginative growth and to access the vast array of art and design further study and careers. It is an excellent complement to many other areas of study, as it teaches you to be analytical, to solve problems creatively and to gain a cultural awareness. The art and design specification encompasses a wide range of art and design based disciplines, though this course is firmly rooted in core fine art traditions. Artwork can be painted, drawn, photographic, mixed media, textiles or graphic media. This flexible course enables students to continue to make a broad range of art, or specialise in any of the named media and more, dependent on host school resources.

Course Content

Component 01: Personal Investigation

A portfolio of work based on a self-directed theme leading to finished outcome/s. The course begins with an initial 'foundation' course, working with a variety of 2D and 3D media in various traditional and digital formats. As you identify strengths and interests, you will select a more focused pathway, exploring personally selected subject matter and methods of working. The

portfolio may be presented as sketchbooks, mounted sheets, maquettes, digital presentations or moving image. Accompanying the portfolio is a written and visual related study of an artist, theme or process which features within your practical work. The related study enables you to develop and communicate your knowledge and understanding of art historical movements, genres, practitioners and artworks. It also builds your understanding of the relationship between society and art, art historical terms, concepts and issues.

Component 02: Externally Set Task

A pre-released paper is issued with a choice of themes, each with written and/or visual starting points, briefs or stimuli. You will choose one option for which you will generate an appropriate personal response, during a set amount of supervised time, for assessment. You will be given a preparatory period for research, planning and development of ideas.

Course Entry Requirements

5 or above at GCSE

Course Specification

OCR H600-H606 (HGS & TPS)

[OCR Art & Design Specification link](#)

Pearson 9FA0 (HBS)

[Pearson Art & Design Specification link](#)



Biology – A Level

Taught At

Hitchin Boys' School, Hitchin Girls' School and The Priory School

Course Overview

The aim of the course is to gain an insight into the Science of Life. You will study exciting and sometimes controversial issues such as genetic engineering, recent medical developments, biotechnology and environmental issues. You will develop practical skills by planning experiments, collecting data, analysing experimental results and making conclusions.

Course Content

This course is split into six modules and combined with the Practical Endorsement, constitutes the full A Level qualification.

The modules can be summarised as:

1. Development of practical skills in biology
2. Foundations in biology
3. Exchange and transport
4. Biodiversity, evolution and disease
5. Communication, homeostasis and energy
6. Genetics, evolution and ecosystems

Teaching of practical skills is integrated with theoretical topics and they are both assessed through the written exam papers. For the practical endorsement, your class teachers will assess your practical skills in lessons, with a minimum of 12 practical activities to be carried out over the 2 years. At the end of the course, this will be reported separately to the exam grade as a pass or fail.

Biology is essential for careers in medicine and veterinary sciences as well as in disciplines such as biochemistry, microbiology, ecology and environmental sciences. We recommend that Biology is taken in conjunction with complementary subjects such as the other Sciences and you must have confidence in basic mathematical methods.

Course Entry Requirements

6 or above in GCSE Mathematics
6 or above in GCSE Biology or 7/6 or above in GCSE Combined Science

Course Specification

OCR H420

[Biology Specification link](#)

Feranmi, Head Student - HBS



My name is Feranmi and I'm a proud member of the Senior Prefect Team with my role as the Head Boy of the school. My three A level choices are Maths, Chemistry and Biology. Surprisingly, I'm not going on to a medicine or dentistry degree at university, in fact I'm going on to do a computer science degree. In my early years of school, I always enjoyed science and doing practical experiments and I can confirm the foam explosions still continue all the way right through Sixth Form.

Sixth Form is how Hitchin Boys' prepares you to enter the adult world whether that's through university or an apprenticeship. The values we are taught in lower school still remain, however a few changes are that we gain more responsibility and freedom. Although A levels can be difficult at times, there is an amazing support team that will always be able to offer help and advice. I promise that you and your peers will thoroughly enjoy the sixth form experience as they are some of the best years of your life.

Business – A Level (AQA)

Taught At

Hitchin Boys' School

Course Overview

In this **AQA course**, we demonstrate the interrelated nature of Business using business models, theories and techniques to support analysis of contemporary business issues and situations. The content of the course is designed to engage you through topics and issues that are relevant in today's society, through key contemporary developments such as digital technology, business ethics and globalisation topics.

Course Content

The complete A Level course covers the following topics:

- What is Business?
- Managers, leadership and decision making
- Decision making to improve marketing performance
- Decision making to improve operational performance
- Decision making to improve financial performance
- Decision making to improve human resource performance
- Analysing the strategic position of a business
- Choosing strategic direction

- Strategic methods: how to pursue strategies
- Managing strategic change

For the A Level, there will be three 2 hour exams, assessing all of the topics above.

Course Entry Requirements

5 or above at GCSE

Course Specification

AQA 7132

[AQA Business Specification link](#)

Business – A Level (Pearson)

Taught At

Hitchin Girls' School

Course Overview

Studying business in this **Pearson Edexcel** course, provides an opportunity for you to study the real world of business, finding out along the way why businesses exist and what they do to be successful. You will learn that businesses are likely to be profitable if they meet the needs and wants of their customers but that profit is not the only measure of success. We want students to be genuinely interested in asking why some firms thrive and others fail and likewise with entire economies.

Course Content

In **Theme 1: Marketing and People** and **Theme 2: Managing Business Activities** you will build knowledge of core business concepts and apply them to business contexts to develop a broad understanding of how businesses work. In **Theme 3: Business Decisions and Strategy** and **Theme 4: Global Business** you will develop a breadth and depth of knowledge and understanding, with applications to a wider range of contexts and more complex business information, requiring you to take a more strategic view of business opportunities and issues.

This course offers you the chance to develop skills, knowledge and understanding which will prepare you for entry to the workplace, perhaps on an apprenticeship in business finance or management or onto a university course. Many students have gone into higher education degree courses in business or specific aspects of business. An increasing number are finding apprenticeships with big accounting firms, manufacturing firms and public sector organisations.

Course Entry Requirements

5 or above at GCSE

Course Specification

Pearson Edexcel 9BS0

[Pearson Business Specification link](#)

BUSINESS – L3 BTEC (Single and Double Award)

Taught At

The Priory School and Hitchin Boys' School

Course Overview

The BTEC Extended Certificate or National Diploma in Business gives you the opportunity to develop the knowledge, understanding and skills that underpin the business sector and that are required for further or higher education. It can be taken as a single or double award qualification equivalent to 1 or 2 A Levels. You will study specific topics including marketing, international business, management and finance. You will develop a number of transferable skills, including the ability to work independently, to undertake methodical research and to work effectively in a group.

Course Content

The units covered will be from the following:

- Exploring Business
- Developing a Marketing Campaign
- Personal and Business Finance
- Managing an Event
- International Business
- Principles of Management
- Recruitment and Selection Process
- Market Research

Units will be assessed either by written exam, by carrying out a task under supervision, or by the completion of written assignments.

This qualification can lead on to a number of university courses, higher level apprenticeships or directly into employment. Areas of employment could include marketing, events management, human resources, administration and finance.

Course Entry Requirements

Standard entry requirements apply

Course Specification

Pearson Edexcel BTEC Level 3 Extended Certificate or National Diploma in Business

[Pearson L3 Business BTEC Double Award Specification Link](#)

[Pearson L3 Business BTEC Single Award Specification Link](#)



CHEMISTRY – A LEVEL

Taught At

Hitchin Boys' School, Hitchin Girls' School
and The Priory School

Course Overview

The aims of the course are to develop your interest in chemistry, to appreciate how society makes decisions about scientific issues, to develop your skills, knowledge and understanding of how science works and to develop knowledge and understanding of different areas of chemistry and how they relate to each other.

Course Content

The course is split into six modules and combined with the Practical Endorsement, constitutes the full A Level qualification.

The modules can be summarised as:

- Development of practical skills
- Foundations in chemistry covering concepts required throughout the remaining modules including atoms, compounds, molecules and equations.
- Periodic table and energy
- Core organic chemistry
- Physical chemistry and transition elements
- Organic chemistry and analysis

Teaching of practical skills is integrated with theoretical topics and they are both assessed through the written exam papers. For the practical endorsement, your class teachers will assess your practical skills in lessons, with a minimum of 12 practical activities to be carried out over the 2 years. At the end of the course, this will be reported separately to the exam grade as a pass or fail.

A pass at A Level is essential for a chemistry degree as well as for medicine and veterinary qualifications. It can be taken as an only science, because although chemistry contributes well to other subjects, it does not rely on knowledge from other areas, although to do well, a candidate must have confidence in basic mathematical methods.

Course Entry Requirements

6 or above in GCSE Mathematics
6 or above in GCSE Chemistry or 7/6 or
above in GCSE Combined Science

Course Specification

OCR H432

[Chemistry Specification link](#)



CLASSICAL CIVILISATION A LEVEL

Taught At

Hitchin Girls' School

Course Overview

This course provides you with the opportunity to study Greek and Roman civilisation through a range of topics. As well as appreciating classical literature in translation and various background topics we also focus on the culture of Greek and Roman society.

Course Content

There are three components that will be studied over the two year course as follows:-

Year 12

- The World of the Hero. This is the compulsory study of literature in translation and we will be undertaking an in-depth study of Homer's Odyssey.
- Beliefs and Ideas. This component looks at one area of classical thought in combination with both literature in translation and visual/material culture. We will be studying Democracy and the Athenians.

Year 13

- The World of the Hero. We will be undertaking our second in-depth study of Virgil's Aeneid.
- Culture and the Arts. This is the study of visual and material culture and we will be looking at Greek Theatre.

Lessons will focus on discussion of the topics and the wider social and historical context. An element of independent study is expected, and regular essays/context questions are set. All units are assessed by written examination. There is no coursework option.

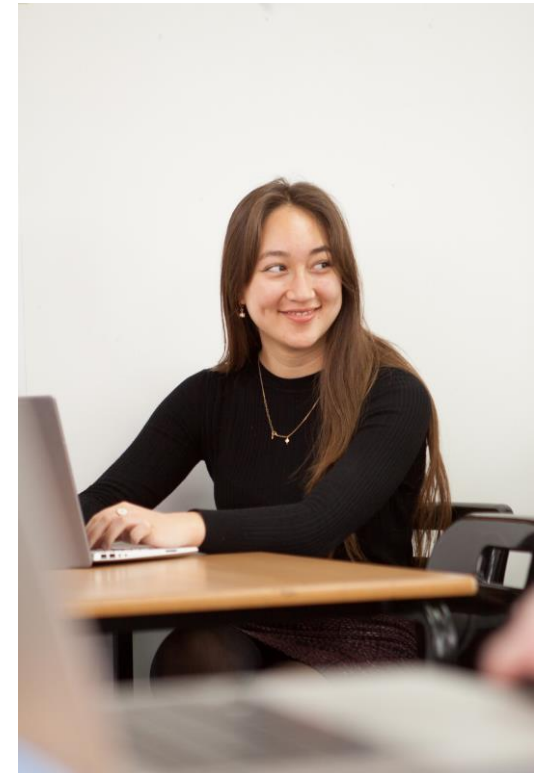
Course Entry Requirements

Standard entry requirements apply

Course Specification

OCR H408

[Classical Civilisation Specification link](#)



COMPUTER SCIENCE A LEVEL

Taught At

Hitchin Boys' School, Hitchin Girls' School and The Priory School

Course Overview

Advances in computing are transforming the way we work, live and interact with one another. This course has been designed to allow you to gain a broad understanding of Computer Science. It offers excellent progression opportunities into higher education and the ability to thrive in any work place.

Course Content

You will have a chance to study the following areas:

- Fundamentals of programming
- Fundamentals of data structures
- Fundamentals of algorithms
- Theory of computation
- Fundamentals of data representation
- Fundamentals of computer systems
- Fundamentals of computer organisation and architecture
- Consequences of uses of computing
- Fundamentals of communication and networking

- Fundamentals of databases
- Big Data
- Fundamentals of functional programming
- Systematic approach to problem solving
- The computing practical project

You will be assessed at the end of the two years by one on-screen exam, one written exam and a practical computing project.

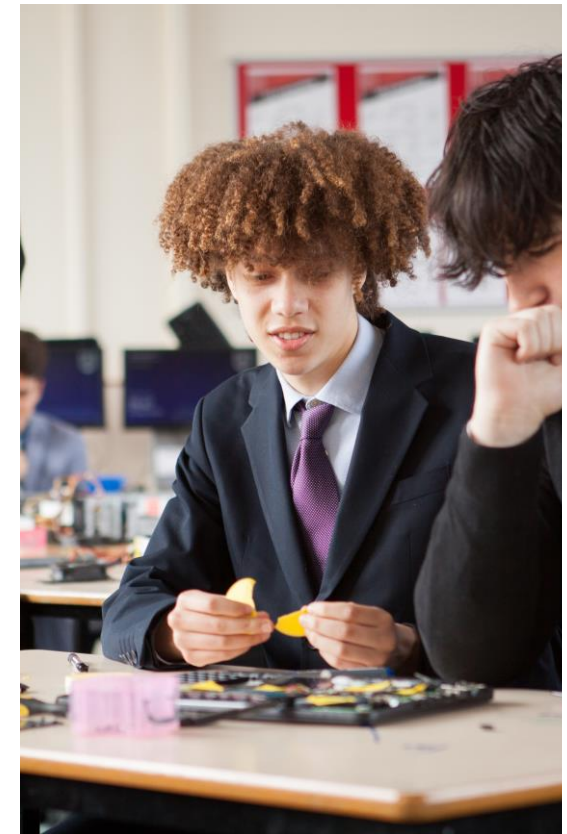
Course Entry Requirements

6 or above in GCSE Mathematics
5 or above at GCSE

Course Specification

AQA 7517

[Computer Science Specification link](#)



CRIMINOLOGY – L3 DIPLOMA

Taught At

The Priory School

Course Overview

Not all types of crime are alike. Are you interested in the different types of crime that take place in our society? Are criminals born, or made? How do we decide what behaviour is criminal? What are the different roles of everyone involved when a crime is detected?

Criminology is the study of the reasons why individuals commit crime. By understanding why a person commits a crime, we can develop ways to control crime or rehabilitate the criminal. This course will enable you to use theories of criminality to analyse criminal situations and suggest ways of reducing crime. You will also develop the knowledge and skills to research policy in practice, assess campaigns for changes in awareness and examine information to review verdicts in criminal cases.

Course Content

1. Changing Awareness of Crime

You will understand how crime reporting affects the public perception of criminality. You will then go on to realise how campaigns are used to elicit change and then plan a campaign for change relating to crime. This mandatory unit will be internally assessed through controlled assessments.

2. Criminological Theories

You will understand social constructions, theories and causes of criminality. This will then lead to knowledge of the causes of policy change. This mandatory unit will be externally assessed with a 90 minute examination.

3. Crime Scene to Courtroom

You will gain an understanding of the process of criminal investigations. You will then go onto the prosecution of suspects and be able to review criminal cases. This is a mandatory unit and will be internally assessed through controlled assessments.

4. Crime and Punishment

You will learn about the different processes of the criminal justice system and the role of punishment and social control measures in England & Wales. This mandatory unit will be externally assessed with a 90 minute examination.

After successful completion of this course you could progress onto higher education to study a number of subjects including law, sociology, applied science, criminology, psychology, history, politics and public services. Possible career options include the police force, forensic services, prison service, probation officer, lawyer and criminalist.

Course Entry Requirements

Standard entry requirements apply

Course Specification

WJEC Level 3 Applied Diploma

[WJEC L3 Criminology Specification Link](#)

DIGITAL MEDIA – L3 TECHNICAL

Taught At

The Priory School

Course Overview

In a world saturated with media products, this newly delivered course will give you the opportunity to develop your practical and analytical skills and help you achieve your potential in digital media production. It will support your other post-16 courses and prepare you for progression to the next stage of your lives, whether that's higher education, an apprenticeship or employment.

Course Content

- Media products and audiences
- Journalism and the news industry
- Advertising
- Pre-production and planning
- Creating a media product

Within the Media and Film Department you will have the opportunity to learn how to use professional software as well as equipment in studio facilities.

The course offers a range of assessed units with practical and wider project-based assessment opportunities, as well as examined units on media products and audiences and pre-production and planning.

You will have the opportunity to develop a media product of your choice e.g. a short film, advert, music video, magazine, podcast etc. You will learn how to organise preproduction for a real scenario of the Media and Film Industry.

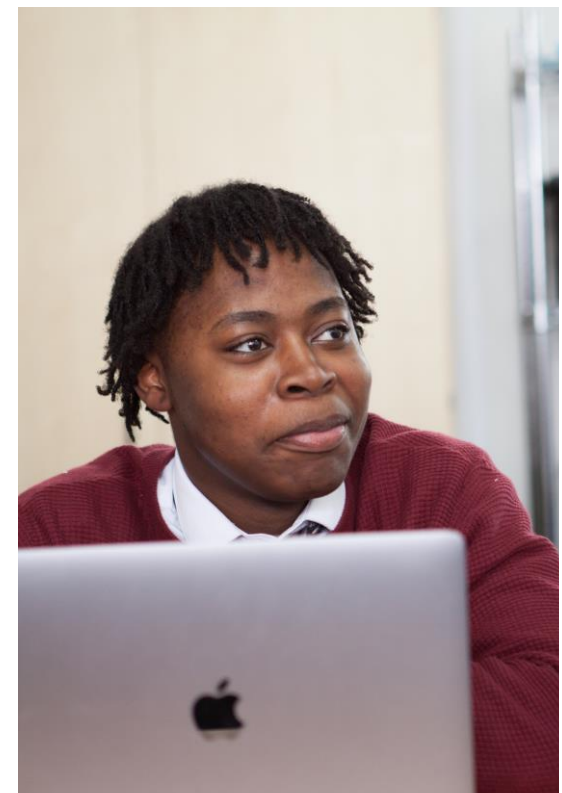
Course Entry Requirements

Grade 5 or above in English Language or Literature

Course Specification

Level 3 Cambridge Technical Extended Certificate in Digital Media

[Cambridge Technical L3 Digital Media Specification link](#)



DRAMA & THEATRE – A LEVEL

Taught At

Hitchin Boys' School and Hitchin Girls' School

Course Overview

By studying Drama and Theatre Studies you will develop skills that are not just essential for drama but applicable to a wide range of higher education subjects and in the workplace. This course will refine your collaborative skills, your analytical thinking and your approach to research.

Course Content

This course requires you to demonstrate a practical understanding of a minimum of two complete and substantial performance texts and at least three key extracts from three different texts placed in the context of the whole text. You will study the work and methodologies of two influential theatre practitioners (individual or companies) and you will be required to participate in a minimum of two performances, one devised and one from a performance text studied during the course.

The key skills being developed are:

- The ability to recognise and understand the interrelationship between performer, designer and director.
- The understanding that texts and extracts studied may represent a range of social, historical and cultural contexts.
- The ability to analyse and evaluate your work and the work of others.
- The ability to understand how performance texts can be interpreted and performed.

The course will be assessed through a combination of a written exam and non-examined assessment.

Course Entry Requirements

5 or above at GCSE

Course Specification

AQA 7262

[Drama & Theatre Studies Specification link](#)

Rhea, Deputy Head Student - HGS



My name is Rhea and I am one of the Deputy Head Girls at HGS. My chosen A-levels are Chemistry, Biology and History. Studying these subjects at Hitchin Girls School has led to my constant growing fascination in science subjects and humanities.

Whilst I am still slightly unsure of the path I want to pursue post-18, the sixth form has provided me with an unimaginable amount of opportunity and a variety of skills which I am sure will come into practice whatever I decide to do. Alongside this, the experience of Sixth form has also given me newfound confidence and freedom to make my own decisions. There is a healthy balance of independence yet community that the consortium provides for all students.

ECONOMICS – A LEVEL (AQA COURSE)

Taught At

Hitchin Boys' School

Course Overview

In this course, our approach to Economics is to apply economic theory to support analysis of current economic problems and issues, encouraging you to appreciate the interrelationships between microeconomics and macroeconomics.

Course Content

The content of the course covers:

The operation of markets and market failure

- Economic methodology and the economic problem.
- Price determination in a competitive market.
- Production, costs and revenue.
- Competitive and concentrated markets.
- The market mechanism, market failure and government intervention in markets.

The national economy in a global context

- The measurement of macroeconomic performance.
- How the macroeconomy works: the circular flow of income, AD/AS analysis, and related concepts.
- Economic performance.

- Macroeconomic policy.

You will be assessed at the end of the course by three written examinations

Course Entry Requirements

6 or above in GCSE Mathematics

Course Specification

AQA 7136

[AQA Economics Specification link](#)

ECONOMICS – A LEVEL (PEARSON COURSE)

Taught At

The Priory School

Course Overview

You will be introduced to this Economics course through developing your knowledge of core microeconomic and macroeconomic concepts. There are four themes and each one investigates economic theory through real world businesses and the environments in which they operate.

Course Content

- Markets, consumers and firms
- The wider economic environment
- The global economy
- Making markets work

The topic areas include enterprise, government intervention, globalisation and market power. You will be required to apply your knowledge and understanding and demonstrate an awareness of current economic events and policies

The course is assessed through three exam papers of two hours duration. The third paper is based on a pre-released context such as a specific industry, market or economic issue.

You will develop transferable skills, such as quantitative and analytical analysis that will support your study in a wide range of subjects at further or higher education including any degree in economics or business. You can progress into a wide range of careers ranging from finance, banking, insurance, accountancy and management.

Course Entry Requirements

6 or above in GCSE Mathematics

Course Specification

Pearson – Economics B (9EB0)

[Pearson Economics Specification link](#)

ENGLISH LANGUAGE & LITERATURE – A LEVEL

Taught At

Hitchin Girls' School

Course Overview

This English Language and Literature course offers opportunities for you to develop your subject expertise by engaging creatively, critically and independently with a wide range of texts. You will learn to use literary and linguistic concepts and methods to analyse literary and non-literary texts from a range of modes and genres. You will develop your skills as writers and your skills in analysis through essay writing and re-creative writing.

Course Content

You will study a range of set texts throughout the course. These will consist of a collection of themed non-fiction texts (including autobiography, advertisements and transcripts of speech), a drama text, a collection of poetry and classic prose fiction.

Currently, our set texts include *The Great Gatsby*, *A Streetcar Named Desire*, *Frankenstein* and the poetry of Seamus Heaney. Please be aware that there can be slight changes to this list.

The course will be assessed as follows:

- Paper 1: Telling Stories (non-fiction anthology, prose fiction and poetry anthology) – written examination.
- Paper 2: Exploring Conflict (re-creative writing based on a prose set text with critical commentary and study of a play) – written examination.
- Non-exam Assessment: Making Connections (an independent investigation on a chosen theme and texts) – centre assessed and moderated by the exam board.

English Language and Literature is a useful introduction to further study of linguistics and/or literature. English qualifications open doors to many careers and higher/ further education courses, and provide you with the skills you need for effective and sophisticated written and spoken communication.

Course Entry Requirements

5 or above in GCSE English Language or Literature

Course Specification

AQA 7707

[AQA English Language & Literature Specification link](#)



ENGLISH LITERATURE A LEVEL

Taught At

Hitchin Boys' School, Hitchin Girls' School and The Priory School

Course Overview

Working from the belief that no text exists in isolation but is the product of the time in which it was produced, these courses encourage you to explore the relationships that exist between texts and the contexts within which they are written, received and understood. Studying texts within a shared context enables you to investigate and connect them, drawing out patterns of similarity and difference using a variety of reading strategies and perspectives. In each task, you will be required to argue and to show personal responses and critical preferences, supported by the terminology relevant to the topics and contexts with which you are engaging.

Course Content

Specification A: The three units for this qualification are:

- Unit 1: Love through the Ages
Study of three texts: one poetry text (pre-1900 Anthology) and one prose

text (The Great Gatsby), and one Shakespeare play (Othello). Assessed by examination which will include two unseen poems.

- Unit 2: Texts in Shared Contexts - Modern Times: Literature from 1945 to the Present Day
Study of three texts: one prose, one poetry, and one drama, of which one must be written post-2000. Assessed by examination which will include an unseen extract.
- Unit 3: Coursework:
Comparative critical study of two texts, at least one of which must have been written pre-1900. One extended essay (2500 words).

Specification B: The three units for this qualification are:

- Paper 1: Literary Genres: Aspects of Tragedy (closed book exam)
Study of three texts: one Shakespeare text (Othello), one drama text (Death of a Salesman) and one further pre-1900 text (Tess of the D'Urbervilles).
- Paper 2: Texts and genres: Elements of Crime Writing (open book exam)
Study of three texts: one post-2000 (When Will There Be Good News), one poetry (Crabbe, Browning and Wilde) and one further text (Atonement).

- Non-exam assessment: Theory and Independence
Study of 2 texts: one poetry and one prose text, informed by the study of the Critical Anthology. Two essays of 1250-1500 words, each responding to a different text and linking to a different aspect of the Critical Anthology. One essay can be re-creative but will need to be accompanied by a commentary.

The specifications encourage independent study of a range of texts within a shared context. Studied together they create an understanding of English Literature that will deepen your knowledge and love of the subject.

Course Entry Requirements

5 or above in GCSE English Literature

Course Specification

AQA Lit A 7712 (HBS & HGS)

[AQA English Literature Specification A link](#)

AQA Lit B 7717 (TPS)

[AQA English Literature Specification B link](#)

FASHION & TEXTILES A LEVEL

Taught At

Hitchin Girls' School

Course Overview

This Fashion and Textiles course will engage you in both practical and theoretical studies covering skills and knowledge in technical principles and design and making principles. In this hands-on course you will learn about the history and future of clothes, accessories and fashion while creating your very own products. To achieve success in Fashion and Textiles, you will combine practical and intellectual skills with an understanding of creativity, aesthetics, cultural, social, economic and environmental issues.

Course Content

You will learn how to research and develop your own designs and create final pieces. You explore a wide range of techniques including dyed textiles, traditional and digital print, and embellishment using stitch and mixed media. Alongside this you will gain theoretical knowledge about a range of aspects within the fashion industry, such as marketing, supply chain and commercial manufacturing methods.

You will also complete a self-led personal response identified by your own interests and enquiry, resulting in a rich diversity of approaches on the course and ambitious final outcomes. A supportive, creative environment nurtures your individual talents and prepares you well for Higher Education.

You will be taught a wide range of advanced techniques to create beautiful fashion illustrations and products to help you begin building a portfolio of work. The specification will also draw upon your application of Science and Mathematics to real life situations.

Fashion and Textiles encompasses a wide range of employment opportunities, but the course is firmly rooted in the skills required to design and make high quality products.

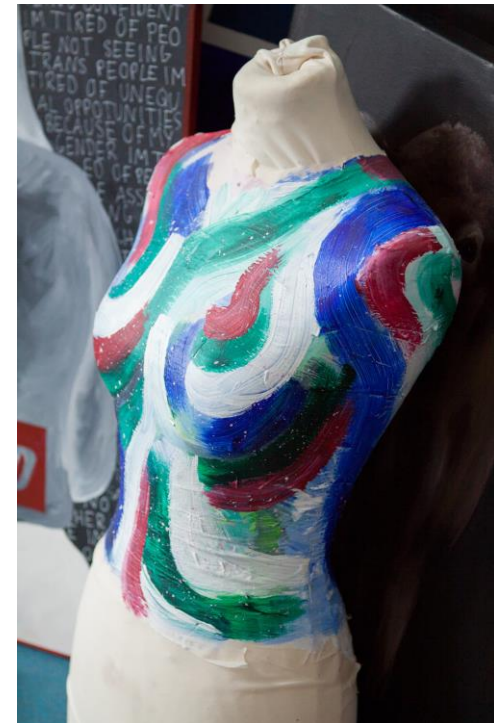
Course Entry Requirements

5 or above at GCSE

Course Specification

AQA 7562

[Fashion & Textiles Specification link](#)



FILM STUDIES – A LEVEL

Taught At

The Priory School

Course Overview

This Film Studies course has been designed to ignite a passion for film and encourage broader cultural and historical perspectives on this academic area of study. You will watch, engage critically with and explore a wide range of film; develop and sustain confident, personal responses to film via textual analysis; and enjoy a variety of critically acclaimed films across the major genres. These include films from different cultural perspectives, films from the Silent Era to the present day, and different forms of film, including documentary, shorts and experimental.

Course Content

The three units for this qualification are:

Unit 1: Film History: Assessed by 2 hour written exam.

You will develop your knowledge of film form through the study of at least 3 US set films from The Silent Era, 1930-1960, 1961-1990. Plus the study of 2 set films from two major European film movements or stylistic developments: Experimental Film (European Surrealist Film) plus German Expressionism or French New Wave.

Unit 2: Critical Approaches to Film. Assessed by 2 hour written exam

You will develop your knowledge and understanding of key critical approaches to film and of narrative, genre, representations and spectatorship by studying at least one set film from each of the following: Contemporary British, Contemporary US, Documentary, Non-European Non-English Language, English Language (Non US), US Independent.

Unit 3: Making a Short Film: Non Examined Assessment

You will study one compilation of short British fiction films and demonstrate your knowledge, understanding and skills through the production of a 5 minute short film (incorporating a digitally photographed storyboard). Plus an evaluative analysis of the production in relation to professionally produced set short films.

Course Entry Requirements

5 or above in GCSE English Language or Literature

Course Specification

OCR H410

[Film Studies Specification link](#)



FOOD SCIENCE & NUTRITION L3 DIPLOMA

Taught At

Hitchin Girls' School

Course Overview

Food Science and Nutrition is an applied qualification that offers exciting and interesting experiences that focus on gaining and applying knowledge through understanding purposeful and work-related contexts that are linked to the food industry.

Course Content

The course allows you to develop a range of complex and specific food-related practical skills, as well as a range of generic and transferable vital life-skills including independent learning, problem-solving skills and project-based research skills. You will complete three units, two mandatory and one optional.

Unit 1: Mandatory: Meeting Nutritional Needs of Specific Groups

This unit will be completed in year 12 and enables you to demonstrate an understanding of the science of food safety, nutrition and nutritional needs in a wide range of contexts. Through on-going practical sessions you will gain practical skills to produce quality food items to meet the needs of individuals.

Unit 2: Mandatory: Ensuring Food is Safe to Eat

Completed in Y13 this unit enables you to develop an understanding of the hazards and risks in relation to the storage, preparation and cooking of food in different environments and the control measures needed to minimise these risks.

Unit 3: Optional: Experimenting to Solve Food Production Problems

One of the optional units in Y13 this will enable you to understand the properties of food in order to plan and carry out experimental work. The results would be used to propose options to solve food production problems.

Unit 4: Optional: Current Issues in Food Science and Nutrition

The second optional unit in Y13 will enable you to develop the skills needed to plan, carry out and present a research project on current related to food science and nutrition.

The range of units available would support your progress, from GCSE in particular GCSEs in Hospitality and Catering, Food Preparation and Nutrition, Biology, Physical Education, Humanities and Design & Technology.

Course Entry Requirements

5 or above at GCSE

Course Specification

WJEC Level 3 Diploma in Food Science and Nutrition

[Food Science & Nutrition Specification link](#)



FORENSIC & CRIMINAL INVESTIGATION – L3 BTEC

Taught At

Hitchin Boys' School

Course Overview

The aim of Forensic and Criminal Investigation is to enable you to understand the workings of the criminal mind, how crime scenes are investigated and the procedures followed, and collect and analyse evidence from a crime scene. The programme contains a mix of modules that incorporate a range of topics, and there is a strong emphasis on practical laboratory work to support learning. It is equivalent to two A-levels. Please note that some of the content from this course is also covered in the Investigative Science course, so the two courses cannot be taken together.

Course Content

You will study six mandatory units, plus two optional units. The mandatory units are as follows:

- Principles and Applications of Science 1. You will explore some of the key science concepts in biology, chemistry and physics such as animal and plant cells; tissues; atomic structure and bonding; chemical and physical properties of substances related to their uses; waves and their application in communications.

- Practical Scientific Procedures and Techniques. You will be introduced to standard laboratory equipment, laboratory safety and quantitative laboratory techniques including titration, calibration, chromatography and calorimetry, which are relevant to the chemical and life science industries
- Science Investigation Skills. Here you will cover the stages involved and the skills needed in planning a scientific investigation: how to record, interpret, draw scientific conclusions and evaluate. As well as drawing on the previous units, these skills will be delivered through subject themes ranging from enzymes and diffusion to electrical circuits.
- Forensic Investigation Procedures in Practice. You will develop techniques in collecting, analysing and reporting chemical, physical and biological evidence during forensic investigations.
- Applications of Criminology. Criminology is the study of crime and criminal behaviour, drawing on psychology, sociology, law and other disciplines to explain the causes and prevention of crime. You will study how different aspects of criminology help us to understand the reasons why some people may commit crimes and the various methods of crime prevention in England and Wales.

- Criminal Investigation Procedures in Practice. Here you will develop and understand of the Criminal Justice System (CJS) including the police and courts. You will cover the legal framework that criminal investigators must work to in order to protect individual rights, as well as the adversarial system where prosecution and defence set out evidence in court to determine guilt or innocence.

Optional units will be selected by the school from the following: Physiology of Human Body Systems; Environmental Forensics, Forensic Fire Investigation, Forensic Traffic Collision Investigation, Forensic Anthropology and Archaeology, Practical Chemical Analysis.

The course will be examined through a mixture of external and internal assessment, including written exams, set tasks, case studies and project work.

Course Entry Requirements

5 or above in GCSE Mathematics
5 or above in GCSE Separate Sciences or
5-5 or above in GCSE Combined Science

Course Specification

Pearson BTEC National Diploma
[Forensic and Criminal Investigation Specification Link](#)

FRENCH – A LEVEL

Taught At

Hitchin Boys' School, Hitchin Girls' School and The Priory School

Course Overview

Modern Foreign Languages are becoming increasingly important because of their ever-increasing relevance to the world of work. As well as providing a fascinating insight into other cultures, the course is designed to provide the opportunity to explore intellectually stimulating topics including social issues and current affairs.

Course Content

Building on GCSE, the course units focus on the following topic areas:

Year 12:

- The Changing Nature of Families in France
- "Cyber-society"
- Voluntary Work
- Heritage
- Contemporary Music
- Cinema Movements in the French-speaking World.

Year 13:

- Contemporary Society
- Criminality
- Political Engagement and the Right to Vote
- Politics and Immigration.

In Paper 1 (50%) you are required to tackle listening and reading comprehension tasks that relate to these topics and to translate short passages from English into French and French into English.

In Paper 2 (20%) you are required to write about two novels, or a novel and a film, that you have studied during the course (texts/films will be selected by the teacher from the AQA prescribed list).

In Paper 3, the Speaking Exam, (30%), you will be expected to discuss issues relating to any of the topic areas listed and to talk about a personal area of research that you have undertaken in Year 13.

Language skills are increasingly sought by employers in a wide range of fields; indeed, many international companies expect competence in more than one foreign language. As far as the Consortium and universities are concerned, languages are compatible with almost any combination of support subjects, whether arts, sciences, or a mixture of both.

Course Entry Requirements

6 or above at GCSE in French

Course Specification

AQA 7652 – French

[French Specification link](#)

Jess, Head Student - TPS



Hi, I'm Jess and I am one of the Head Students at TPS. I currently take French, Music and History and am hoping to read Modern Languages at university next year. Last year, I also completed my EPQ, a primary experiment to discover whether singing can improve foreign language skills, providing me with a range of invaluable skills and definitely helping to bridge the gap between KS4 and KS5.

As two of my subjects are joint-taught across the consortium, I have had the privilege of seeing first-hand the amazing community across all three Hitchin schools. At first, it was nerve-racking being outside of TPS and required some adaptation but being a consortium student has built huge amounts of resilience and allowed me to meet so many new people, so definitely don't be put off a subject because it isn't taught at the school you know!

I am also lucky enough to participate in a wide range of musical ensembles offered at TPS. Whilst I found sixth form to be a big adjustment, maintaining hobbies I enjoy has been hugely beneficial and helped me to relax. I would encourage any sixth form student to take the most of the opportunities offered and ensure that you have a balance between working hard and not burning out. Sixth form can be challenging, but above everything else, I have found that everybody just wants to help you, and despite the new independence that Year 12 brings, the level of support is incredible. The teachers work very hard to ensure that you achieve what you want to in a safe and encouraging environment. Make sure that you pick the right subjects for you, no matter how unusual a combination you think it may be, and good luck!

GEOGRAPHY – A LEVEL

Taught At

Hitchin Boys' School, Hitchin Girls' School and The Priory School

Course Overview

The course aims to study the relationship between people and their environment at a variety of scales from local to global. It develops an understanding and knowledge of geographical issues and offers the opportunity to use and develop geographical skills. A Level Geography enables you to appreciate the dynamic nature of the subject; how places, environments and issues change and how people respond to those changes.

Course Content

The course covers a range of physical and human geography topics with each school studying a slightly different combination. In addition all students are required to investigate an area of geography of interest to them. As part of this they are expected to collect data in the field. You will be supported through this with fieldwork opportunities.

The Physical Geography options include; coastal systems and landscapes, hazards, water and carbon cycles and cold environments (dependent on school choice).

Human Geography options include; changing places, contemporary urban environments and global systems and global governance. You will also complete a non-examined assessment worth 20% of the overall qualification.

Geography is a rigorous A Level and is recognised as such by universities and employers alike. Its wide ranging skills, which include analytical, ICT, statistical, research and presentation, and subject area, means geography students go on to study a wide range of subjects from law to engineering and enter many professions such as working for the Environment Agency, accountancy and marketing.

Course Entry Requirements

5 or above at GCSE
5 or above in GCSE Mathematics

Course Specification

AQA 7037

[Geography Specification link](#)

Theo, Deputy Head Student - HBS



Studying Mathematics, Economics and Geography has given me the perfect blend of numerical and literacy skills I was looking for, while still keeping my future options open. Challenging but rewarding, Sixth Form has provided me with the foundations for effective communication and critical, independent thinking. These highly transferable skills will assist me for life after Sixth Form, whether it be studying at university, starting a business or working in a job.

Alongside my A-Levels, I completed an EPQ; I used this as an opportunity to develop my essay skills and time management, while also being able to delve into the depths of Cryptocurrencies.

The freedom of Sixth Form has taught me self-discipline and independence when it comes to learning, and while yes, it is a step up from GCSE, if you plan your workload effectively, it can be an opportunity to thrive.

GERMAN – A LEVEL

Taught At

Hitchin Boys' School

Course Overview

Modern Foreign Languages are becoming increasingly important because of their ever-increasing relevance to the world of work. As well as providing a fascinating insight into other cultures, the course is designed to provide the opportunity to explore intellectually stimulating topics including social issues and current affairs.

Course Content

Building on GCSE, the course units focus on the following topic areas:

Year 12

- The Changing Nature of Families in Germany
- The Digital World
- Youth Culture: Fashion and Trends
- Music and Television
- Festivals and Traditions
- Art and Architecture
- Cultural Life in Berlin.

Year 13

- Immigration, Integration and Racism
- Germany and the European Union
- Politics and Youth
- German Re-unification and its Consequences.

In Paper 1 (50%) you are required to tackle listening and reading comprehension tasks that relate to these topics and to translate short passages from English into German and German into English.

In Paper 2 (20%) you are required to write about two novels, or a novel and a film, that you have studied during the course (texts / films would be selected by the teacher from the AQA prescribed list).

In Paper 3, the Speaking Exam, (30%), you will be expected to discuss issues relating to any of the topic areas listed and to talk about a personal area of research that you have undertaken in Year 13.

Language skills are increasingly sought by employers in a wide range of fields; indeed, many international companies expect competence in more than one foreign language. As far as the Consortium and universities are concerned, languages are compatible with almost any combination of support subjects, whether arts, sciences, or a mixture of both.

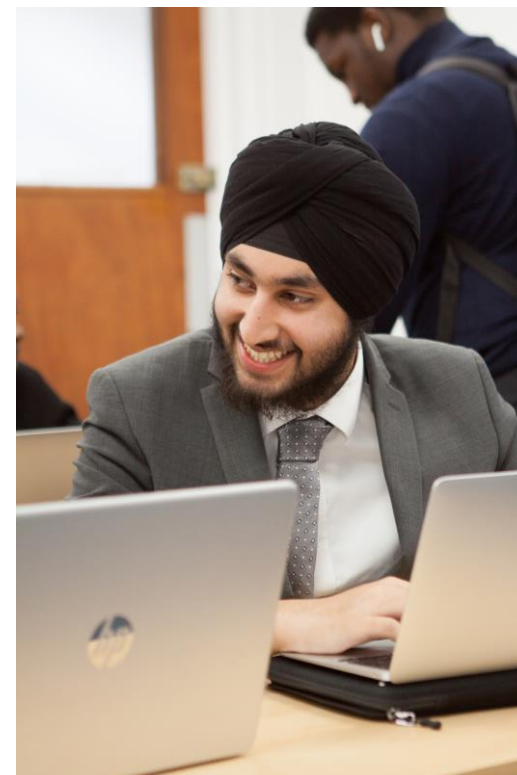
Course Entry Requirements

6 or above at GCSE in German

Course Specification

AQA 7662

[German Specification link](#)



HEALTH & SOCIAL CARE L3 BTEC

Taught At

The Priory School

Course Overview

This is a vocationally-related qualification which develops themes required for work or further study in the rewarding Health and Social Care sector.

Course Content

You will study for two years, taking the National Extended Certificate which is equivalent to one A Level.

There are three mandatory units:

- Working in Health and Social Care
- Human Lifespan and Development
- Meeting Individual Care & Support Needs.

Plus one optional unit which could include:

- Sociological Perspectives
- Psychological Perspectives
- Supporting Individuals with Additional Needs
- Physiological Disorders and their Care

Assessment is varied; two of the core units are externally assessed with examination.

Other forms of assessment include presentations, role plays, written assessments and reflective diary entries.

The course is excellent for university level study or working life in an occupation within the health or social care sectors.

Course Entry Requirements

Standard entry requirements apply

Course Specification

Pearson BTEC L3 Extended Certificate in Health & Social Care

[Pearson Health & Social Care Specification link](#)

HEALTH & SOCIAL CARE L3 TECHNICAL

Taught At

Hitchin Girls' School

Course Overview

This course focuses on the skills, knowledge and understanding that today's universities and employers demand. You will develop professional and personal skills through interaction with people who either work in the sector or require care or support, as well as theoretical knowledge and understanding to underpin these skills. This will allow you to offer specific, person-centred care and support and build positive relationships with the people you are working with, so that their needs and requirements are met whilst they maintain control of their own care and support.

Course Content

You will consider the impacts to people living with conditions or illnesses such as the social, financial and psychological. You will also learn about the legislation and guidance supporting health and social care. Over the two years you will complete 6 units – (3 coursework assignments and 3 examinations).

The four mandatory units are

- Building positive relationships in health and social care
- Equality, diversity and rights in health and social care
- Health, safety and security in health and social care
- Anatomy and physiology for health and social care

And then two further optional units which could include

- Nutrition for health
- Public health
- Psychology for health and social care
- Sociology for health and social care
- Infection control
- Supporting people with mental health conditions

Course Entry Requirements

Standard entry requirements apply.

Course Specification

OCR Cambridge Technical Level 3 Extended Certificate in Health & Social Care

[OCR Health & Social Care Specification link](#)

HISTORY – A LEVEL

Taught At

Hitchin Boys' School, Hitchin Girls' School and The Priory School

Course Overview

History as a subject is highly valued by both universities and employers, due to the knowledge and transferable skills it develops, ranging from analysis and comprehension to research and presentation skills.

Course Content

In addition to enhancing your knowledge of periods of British and European history, this course will broaden your awareness of aspects such as politics, religion, culture and society, and provide an understanding of how and why changes have occurred over time, and how all of this impacts on the world today.

History A Level Units at HGS

- Russia, 1917-91: from Lenin to Yeltsin
- The German Democratic Republic, 1949-90
- Protest, Agitation and Parliamentary Reform in Britain 1780-1928
- Coursework – The Russian Revolution, 1917

History A Level Units at TPS

- Britain transformed, 1918-97
- The USA, 1955-92: Conformity and challenge
- Rebellion and Disorder under the Tudors 1485-1603
- Coursework: The Causes of the First World War

History A Level Units at HBS

- Britain c1785-c1870, Democracy, Protest and Reform
- The Unification of Germany 1840-71
- Civil Rights and Race Relations in the USA 1850 - 2009
- Coursework – The Civil Rights Movement: 1870-1970

A key course if you are planning to continue on to university to study history related subjects. It also provides a strong grounding or further study in humanities and social sciences. It combines well with subjects such as English Literature, Economics, and Government and Politics.

Course Entry Requirements

5 or above at GCSE
5 or above in English Language or Literature

Course Specification

Pearson 9H10

[History Specification link](#)

Finley, Deputy Head Student - HBS



The subjects I am studying for A-level are Geography, History and Philosophy & Ethics. History is a real passion of mine and has been for many years. I am fascinated by the matters of the past, how leaders operated and how that shapes the world we live in today. Philosophy & Ethics has enabled me over the last year to question my own beliefs towards matters such as the existence of God, why we experience evil and suffering and whether an action is moral or not. With Geography at A-level, it has given me the chance to do my own coursework, studying the effects of affordable housing opportunities and what that means for the residents of East London. As well as this, I have been able to further my studies through my EPQ. Meaning that I can dig deeper into my own opinions and evaluation of something I am passionate about; mine focussing on the ethicalities surrounding the invasion of Iraq.

I hope to study History and Philosophy at university. Sixth Form has given me this opportunity; the benefits of gaining your own independence, as well as taking control of your own learning whilst still being reassured with a strong network of support from the teachers around me. This isn't to mention the opportunities such as volunteering, applying for roles in the Senior Prefect Team or being a prefect for a subject you are keen on plus many more. I would without a doubt recommend it to anyone looking at it as an option.

INFORMATION TECHNOLOGY L3 BTEC

Taught At

Hitchin Boys' School

Course Overview

This qualification is designed for students who are interested in an introduction into the study of creating IT systems to manage and share information alongside other fields of study, with a view to progressing to a wide range of higher education courses, not necessarily in IT.

Course Content

The qualification is equivalent to one A Level. There are 4 units that are assessed in a variety of ways:

- Information Technology Systems - exam based.
- Creating systems to manage information – task set by exam board.
- Using social media in business - assignment based.
- Website development – assignment based.

Within these four units you will learn about databases, specialist ICT software; multimedia design e.g. computer game, animation or video, and systems analysis and design. They will provide opportunities for a detailed study of the Internet and learning how to produce a high quality website.

You will develop an understanding of the relationships between hardware and software that form an IT system, managing and processing data to support business and using IT to communicate and share information.

Course Entry Requirements

Standard entry requirements apply.

Course Specification

Pearson BTEC L3 National Extended Certificate in Information Technology

[ICT Specification link](#)

Tiago, Deputy Head Student - HBS



Hello my name is Tiago and I am lucky enough to be a Deputy Head Boy at Hitchin Boys' School. I decided to study Maths, Physics and Geography. I am very glad I made the choices I did, because while they are tough I have thoroughly enjoyed my subjects so far. As well as my A levels I have also taken an Extended Project Qualification (EPQ) which is an amazing opportunity the school offers where you can write 5000 words on any subject you like (I really do mean an, I am writing mine on the Kepa transfer!) and get the equivalent of half an A level. With these subjects I hope to study Aerospace engineering at university which is a dream I have had for a long time and is a path I definitely wouldn't have been able to go down without the great teaching I have received here at school.

Sixth Form is challenging with a higher workload than lower school but that doesn't mean it's all work and no fun. In year 12 alone I have had the opportunity to represent HBS at basketball and athletics, travel to Malaysia and Singapore for a month and go to Twickenham for a day to watch the year 10 rugby team. These experiences, along with a great careers team, pastoral staff and caring teachers, are what make Hitchin Boys' the amazing school it is, helping create well rounded students ready for the post 18 world. I can definitely say I made the right choice choosing Hitchin Boys'. I hope you do the same!

INVESTIGATIVE SCIENCE – L3 BTEC

Taught At

Hitchin Boys' School

Course Overview

This course will continue science study through exploring practical application of knowledge. It will continue to build upon GCSE concepts and will also introduce new theories, ideas and techniques which are fundamental to understanding the world around us. You will also develop the transferable and higher order skills which are valued by higher education providers and employers. It is equivalent to one A Level. Please note that the content from this course is also covered in the Forensic and Criminal Investigation Diploma, so the two courses cannot be taken together.

Course Content

You will study three mandatory units, plus one optional unit. The mandatory units are as follows:

- Principles and Applications of Science 1. In this unit you will explore some of the key science concepts in biology, chemistry and physics such as animal and plant cells; tissues; atomic structure and bonding; chemical and physical properties of substances

related to their uses; waves and their application in communications.

- Practical Scientific Procedures and Techniques. You will be introduced to standard laboratory equipment, laboratory safety and quantitative laboratory techniques including titration, calibration, chromatography and calorimetry, which are relevant to the chemical and life science industries
- Science Investigation Skills. In this unit you will cover the stages involved and the skills needed in planning a scientific investigation: how to record, interpret, draw scientific conclusions and evaluate. As well as drawing on the previous units, these skills will be delivered through subject themes ranging from enzymes and diffusion to electrical circuits.

Optional units will be selected by the school from the following: Physiology of Human Body Systems; Human Regulation and Reproduction; Diseases and Infections.

The course will be examined through a mixture of external and internal assessment, and these will include written examinations, set tasks, case studies and project work.

Course Entry Requirements

5 or above in GCSE Mathematics
5 or above in GCSE Separate Sciences or
5-5 or above in GCSE Combined Science

Course Specification

Pearson BTEC Extended Certificate in
Applied Science

[Investigative Science Specification Link](#)



LATIN – A LEVEL

Taught At

Hitchin Girls' School

Course Overview

This course will help you to acquire some understanding of the culture, politics and social life of Rome at significant periods in history, whilst studying elements of the language and literature of the Classical world.

Course Content

There are four components:

- Unseen Translation (Prose and Verse)
- Prose Composition or Comprehension
- Prose Literature (two Prose texts are studied in depth, and you also study additional literature in translation in order to understand the context from which the set texts have been taken)

- Verse Literature (two Verse texts are studied in depth, and you also study additional literature in translation in order to understand the context from which the set texts have been taken).

Two hours per week will be devoted to the study of the prescribed texts; the rest will be spent on language work. An element of private study is expected.

All units are assessed at the end of the two years by written examination. There is no coursework option.

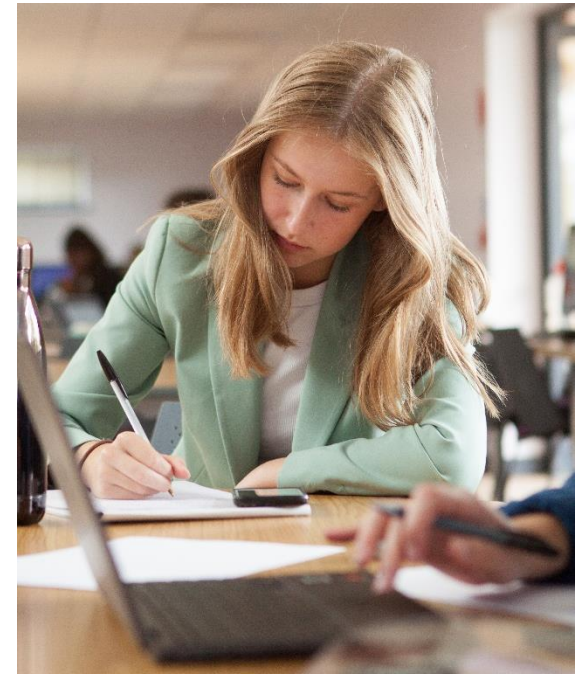
Course Entry Requirements

Grade 6 or above in Latin at Key Stage 4

Course Specification

OCR H443

[Latin Specification link](#)



MATHEMATICS – A LEVEL FURTHER MATHS – A LEVEL

Taught At

Hitchin Boys' School, Hitchin Girls' School
and The Priory School

Course Overview

Mathematics is a useful, elegant and powerful tool which examines and defines relationships and can analyse abstract ideas. It models and solves problems which arise in many areas of life. Mathematics is challenging but interesting. It builds on work you will have met at GCSE, and also introduces ideas that some of the greatest minds of the last millennium have produced. It is a sought-after qualification, both for courses in higher education and for the workplace. Mathematics at A Level is a course worth studying in its own right, and as a supporting subject for the physical and social sciences as well as encouraging the logical thinking which is needed in Law, History and most other disciplines.

Course Content

Mathematics is a popular option across the Consortium and is available in combination with most other subjects. The course involves both pure maths and applied maths. Good mathematicians will want to consider taking both Mathematics

and Further Mathematics at A Level. This course is offered as a fourth option, but must be accompanied by Mathematics A Level.

The study of Further Mathematics adds breadth and depth to the topics covered in A Level Mathematics. It introduces new topics for example matrices, complex numbers, differential equations, polar coordinates. Such topics form an important part of Maths-rich degrees in areas such as the Sciences, Engineering, Statistics, Economics and Computing in addition to Mathematics itself. The content of Further Mathematics enables the study of additional pure modules as well as a wider variety of applied modules.

Course Entry Requirements

7 or above at GCSE for Mathematics
8 or above at GCSE for Further
Mathematics

Course Specification

Pearson 9MA0 and 9FM0 (HGS)

[Pearson Mathematics Specification link](#)

[Pearson Further Maths Specification link](#)

AQA 7357 and 7367 (HBS)

[AQA Mathematics Specification link](#)

[AQA Further Maths Specification link](#)

OCR MEI H640 and H645 (TPS)

[OCR Mathematics Specification link](#)

[OCR Further Maths Specification link](#)



MEDIA STUDIES – A LEVEL

Taught At

Hitchin Boys' School, Hitchin Girls' School and The Priory School

Course Overview

Media Studies is an exciting but demanding course. It combines critical analysis of a range of media forms including TV, film marketing, magazines, advertising, websites and video games with written research skills and creative practical productions.

Course Content

The course teaches you key media concepts and theories which will deepen your understanding of the way we read and understand the media.

You will study a range of set texts for two written examinations and also work independently to a set brief for your practical non-exam assessment. You will need to be prepared to be analytical and creative. Essay writing and practical production skills, for example use of photo editing software, are desirable.

Media Studies Units (WJEC)

- Component 1: Media Products, Industries and Audiences (written examination)
- Component 2: Media Forms and Products in Depth (written examination)
- Component 3: Cross-Media Production (non-exam assessment)

Media Studies Units (OCR)

- Component 1: Media Messages (written examination)
- Component 2: Evolving Media (written examination)
- Component 3: Making Media (non-exam assessment)

It is an excellent starting point to develop into media specialists and progress academically to study the subject further. Employers recognise it as a subject that demonstrates both academic and practical ability. A combination of practical tasks and theoretical study enables you to develop the skills and knowledge required in many industries, such as advertising, broadcasting, journalism, film production, web and graphic design.

Course Entry Requirements

5 or above at GCSE or 5 or above in English Language or Literature

Course Specification

WJEC Eduqas A1680QS (HGS & HBS)

[WJEC Eduqas Media Studies Specification link](#)

OCR H409 (TPS)

[OCR Media Studies Specification link](#)



MUSIC – A LEVEL

Taught At

Hitchin Boys' School, Hitchin Girls' School and The Priory School

Course Overview

This course prepares you for any career or university course that involves music or performing arts. It gives you experience of performance and allows you to further develop all your musical skills and interests.

Course Content

During the course you will continue the key skills of composing, performing and appraising music that you studied at GCSE and study music from a wide range of styles and periods. You will take part in lots of performances and go to see and work alongside professional musicians.

You will learn extended composing skills and analyse a variety of instrumental, vocal, film and fusion music. You will evaluate your own performing abilities and prepare a varied and interesting recital programme, as well as learning about the history and development of music.

- Component 1: Performing
- Component 2: Composing
- Component 3: Appraising Music

Performance will be assessed regularly, giving you opportunities to refine and enhance your skills. You will have practice concerts before your final recital in March/April of Year 13. All units are externally assessed; performance and composition each make up 30% of the final mark and the final examination is worth 40%.

Course Entry Requirements

6 or above at GCSE

Course Specification

Pearson 9MU0

[Music Specification Link](#)

Molly, Deputy Head Student - TPS



I feel extremely privileged to be given the opportunity to be Deputy Head Student, representing the school and upholding the sense of togetherness I have felt within the school community my whole way through.

I take Philosophy and Ethics, History and Sociology, three subjects that I enjoy and will keep my options open whilst I am yet to decide what I want to do for my future. The opportunities that I have had outside of the classroom have put me in a position applicable to the real world that I can use to build my profile, putting me in the best position when I have decided what I want to do. Sixth form has been a great experience so far, I am thankful for the support from the staff and my peers. My advice to you would be to take as many opportunities given to you throughout the school, constantly building yourself up, without taking these chances I wouldn't be where I am today. Doing both, maintaining a good balance, giving yourself breaks and going out, whilst studying and taking these opportunities, are all important for being successful.

MUSIC PERFORMANCE – BTEC

Taught At - The Priory School

Course Overview

This is a two year course which covers a wide range of music performance skills. It allows you to develop your skills through a variety of pathways and allows you to work both independently and within a group. The qualification is equivalent to one A level.

Course Content

There are four units which are completed over the course as follows:

Practical Music Theory and Harmony

You will discover notation styles and learn how to add a melody to chords as well as how to harmonise a melody and create an arrangement of a piece of music.

Working in the Music Industry

This is an externally assessed unit where you are asked to plan an event around a given scenario. Previous events have included a community music concert and a wedding reception.

Working as a Musical Ensemble

This is also an externally assessed unit where you will work in small groups to create a cover of three songs selected from a given list.

Solo Performance/Composition/Improvisation

Students can select the pathway they wish to follow for this final unit depending on their skill set.

This qualification would be appropriate for those considering moving on to a popular music qualification after their post 16 studies.

Course Entry Requirements

Merit at Level 2 in Music Technology or Music Production

Course Specification

Pearson BTEC L3 Extended Certificate in Music Performance

[Music Performance Specification link](#)



MUSIC TECHNOLOGY (Sound Engineering) – L3 BTEC

Taught At

The Priory School

Course Overview

This two year course is a basis of study for the sound engineering sector with a focus on studio recording techniques and DAW production. The qualification is equivalent to one A Level.

Course Content

The course begins with an introduction to using a Digital Audio Workstation (DAW). You will use Logic Pro X to develop your sequencing skills before completing an externally assessed unit where you will be asked to create a short piece of music based on stems which are provided.

In addition to this unit, you will learn to operate a digital 32-channel sound desk and set up holdback monitor mixes for a live sound event. As part of this, you learn about a range of microphones and microphone techniques as well as how to use DI effectively. You will also produce a multi-track recording and work as part of a production team to create an EP.

In total, 5 units will be completed across the two years consisting of:

- Live Sound
- DAW Production
- Music Recording Techniques
- Working and Developing as a Production Team
- Remixing and Re-working

By the end of the course, you will have a range of skills which will enable you to successfully access a range of music production degree courses if you wished to do so.

Course Entry Requirements

Merit at Level 2 in Music Technology or Music Production

Course Specification

Pearson BTEC L3 Extended Certificate in Music Technology (Sound Engineering)

[Music Technology \(Sound Engineering\) Specification link](#)



PERFORMING ARTS – L3 BTEC

Taught At

The Priory School

Course Overview

This course uses a combination of assessment styles to give students confidence they can apply their knowledge to succeed in the workplace – and have the study skills to continue learning on higher education courses and throughout their career.

Course Content

The range of vocational assessments – practical and written – mean you can showcase your learning and achievements to best effect when you take your next step, whether that's supporting applications to higher education courses or potential employers.

The course consists of 4 units – 3 mandatory and one optional as follows:

Unit 1 - Investigation Practitioners Workshop:

This unit is externally marked and contains a practical and written study looking at a particular practitioner or practitioners.

Unit 2 - Developing Skills and Techniques for Live Performance:

This unit is internally assessed and moderated by the exam board. It contains a series of workshops aimed at developing your skills and will involve live performance.

Unit 3 - Group Performance Workshop:

This is a major performance designed to showcase all the key performance and analytical skills encountered on the course.

Unit 4:

There will be one other internally assessed optional unit which will be decided based on the skillset of the learning group.

The course is essentially practical with written analysis and research based learning. The external assessment means that you need to be equipped with strong analytical skills as well as well-developed ability in performance.

Course Entry Requirements

Merit at L2 Performing Arts

Course Specification

Pearson BTEC Level 3 National Extended Certificate in Performing Arts

[Performing Arts Specification link](#)

Daniel, Head Student - TPS



Hello, I'm Daniel and one of the Head Students here at the Priory School.

Choosing to stay at The Priory School for sixth form was an easy option for me. Aside from the abundance of extra-curricular opportunities I have been able to continue with, I felt like I had the network of support to allow me to succeed. I study Biology, Chemistry and Maths alongside the EPQ I completed last year. This will set me up to study medicine at university.

Here, our sixth form team offers a curriculum that provides a balance between academic excellence and personal development, allowing us, as the students, to become well-rounded and successful individuals.

My experience here at sixth form has been filled with opportunity, from the school concerts and production to completing my Gold DofE and attending taster days.

Choosing to stay on at The Priory School for Sixth Form was an easy decision for me. Over the last 6 years, this school has provided me with a safe and comfortable learning environment, surrounded by teachers who want me to succeed.

PHILOSOPHY & ETHICS A LEVEL

Taught At

Hitchin Boys' School, Hitchin Girls' School
and The Priory School

Course Overview

The aims of this course are to encourage you to identify fundamental questions of human existence and morality and to explore such questions within the context of a religious tradition.

Course Content

Component 1 will study Philosophy & Ethics and is divided into two sections:

Section A: Philosophy of religion

- Arguments for the existence of God
- Evil and suffering
- Religious experience
- Religious language
- Miracles
- Self and life after death

Section B: Ethics and religion

- Ethical theories
- Issues of human life and death
- Issues of animal life and death
- Introduction to meta ethics
- Free will and moral responsibility
- Conscience
- Bentham and Kant.

Component 2 will study Christianity & Dialogues and will look at:

- Sources of wisdom and authority
- God/gods/ultimate reality
- Self, death and the afterlife
- Good conduct and key moral principles
- Expression of religious identity
- Religion, gender and sexuality
- Religion and science
- Religion and secularisation
- Religion and religious pluralism.

The Dialogues section is synoptic and explores how Christianity, Philosophy and Ethics work together as disciplines. Both components are assessed by written examination.

Philosophy and Ethics is a highly respected qualification that leads into a wide range of university qualifications and careers that require good verbal and reasoning skills such as journalism, law, medicine and politics as well as careers that involve a good understanding of people such as nursing, psychology, social work, teaching and police work to name just a few.

Course Entry Requirements

5 or above at GCSE or 5 or above in English Language or Literature

Course Specification

AQA 7062 (Religious Studies)

[Philosophy & Ethics Specification link](#)



PHOTOGRAPHY – A LEVEL

Taught At

Hitchin Boys' School and Hitchin Girls' School

Course Overview

This course will enable you to develop the creative and intellectual skills for imaginative growth and to access the vast array of art and design further study and careers. It is an excellent complement to many other areas of study, as it teaches you to be analytical, to solve problems creatively and to gain a cultural awareness.

Course Content

Component 01: Personal Investigation
This specialist pathway is an opportunity to explore techniques and approaches specific to photography. You will learn about traditional analogue and digital photography, editing and image manipulation.

After an initial 'foundation' course, you will identify personal themes and processes to pursue. You present a portfolio in the format of journals, mounted sheets, digital presentations or animation, leading to a final outcome/s in form of still and/or moving images.

Accompanying the portfolio is a related study of a photographer, theme or process which features within your practical work. The related study enables you to develop and communicate your knowledge and understanding of art historical movements, genres, practitioners and artworks. It also builds your understanding of the relationship between society and art: art historical terms, concepts and issues.

Component 02: Externally Set Task

This component is externally set by the examining board. A pre-released paper is issued to candidates with a choice of themes, each with written and/or visual starting points.

You will choose one option for which you will generate an appropriate personal response, during a set amount of supervised time, for assessment. You will be given a preparatory period for research, planning and development of ideas.

Course Entry Requirements

5 or above at GCSE

Course Specification

Pearson 9PY01 (HBS)
OCR H603 (HGS)

[Photography Specification link - Pearson](#)
[Photography Specification link - OCR](#)

Jess, Deputy Head Student - TPS



I'm Jess and I'm a student at The Priory School but also study at Hitchin Girls School. I have taken English Literature, Politics and Geography. At first, I was worried that I wouldn't be able to keep up with the workload and requirements that my subjects demanded, however, I'm now really pleased with the subjects I picked and have been able to find certain helpful overlaps between them. I definitely suggest taking subjects you really enjoy so you can really make the most of the next two years!

It's definitely true that sixth form is a big jump from year 11. However, there are many opportunities and support systems in place to ensure your transition will be as smooth and exciting as possible. I definitely struggled at first to come to terms with the amount of work, and to find a balance between school, extra-curricular and my social life. With support from my teachers I was able to settle in and make the most out of my sixth form experience.

I would definitely suggest taking as many opportunities as you are given. Sixth form is a chance for trying out new things and exploring different pathways.

PHYSICAL EDUCATION A LEVEL

Taught At

Hitchin Boys' School, Hitchin Girls' School
and The Priory School

Course Overview

The course takes a multi- disciplinary approach encouraging the development of different methods of enquiry drawn from a range of disciplines. The focus is on participation and performance in physical activity and sport, as part of a balanced, active and healthy lifestyle and encourages you to develop a broad but detailed knowledge of the theoretical aspects that underpin performance sport and physical activity.

Course Content

During this course, you will cover four units;

Paper 1 (30%) Physiological factors affecting performance, including:

- Applied Anatomy and Physiology
- Exercise Physiology, and
- Biomechanics.

Paper 2 (20%) Psychological factors affecting performance, including:

- Skill Acquisition, and
- Sports Psychology

Paper 3 (20%) Socio Cultural issues in physical activity and sport, including:

- Sport and Society, and
- Contemporary issues in Physical Activity and Sport

Non- Examined Assessment (30%)
Performance in P.E., including:

- Performance or coaching of one sport, and
- Analysis of Performance for Improvement (EAPI).

You will be expected to work in groups and engage in independent learning. You must be able to participate practically and show commitment to one practical area outside of lesson time. This will probably involve training and competitive commitments ranging from at least school team level and beyond.

This course is excellent preparation if you wish to progress to degree level study in Physical Education, Sports Science, Sports Studies, Teaching, Leisure and Tourism, Sports Management, Sports Technology, Physiotherapy and Coaching.

Course Entry Requirements

5 or above at GCSE

5-5 or above in Combined Science

Course Specification

OCR H555

[Physical Education Specification link](#)

Paige, Deputy Head Student - HGS



I'm Paige and I am one of the Deputy Head Girls at HGS this year. I'm currently studying Psychology, PE and Biology with the aspiration of furthering my studies in sport at University.

Martin Luther King once said that "The function of education is to teach one to think intensively and to think critically. Intelligence plus character – that is the goal of true education." Fortunately for me, Hitchin Girls School embraces this and my experience in A Levels at the school has been one of immense enrichment and enlightenment. With the support and guidance of excellent teachers I have not only had the opportunity to enrich my mind and develop my character, but have been encouraged to think for myself in and outside of the classroom.

I have been fortunate to have benefited directly from the Consortium having benefited from the skilled teachers, incredible resources and the professional and social interaction with other students from the three schools.

My advice to anyone going into Sixth Form is to work consistently right from the start as 'a little progress each day adds up to big results' and to embrace and enjoy all of the opportunities and experiences that are made available to you. The two years pass really quickly!

PHYSICS – A LEVEL

Taught At

Hitchin Boys' School, Hitchin Girls' School and The Priory School

Course Overview

The aims of the course are to develop your interest in Physics; the course builds upon concepts you have met at GCSE, and will also introduce new theories, ideas and techniques which are fundamental to understanding the world around us. Physics is the most fundamental science, and a deeper understanding of physics will be invaluable if you intend to pursue any science or engineering based courses. Physics is also strongly recommended for courses in Astronomy and Mathematics as it unlocks a deeper understanding to these subjects.

Although it is not essential to also be studying Mathematics at A Level it is strongly advisable. Those who do not will be expected to maintain the level of mathematical techniques and new mathematical concepts that will be introduced in their free time in order to succeed in A Level Physics.

Course Content

This course is split into six modules and combined with the Practical Endorsement, constitutes the full A Level qualification.

The modules can be summarised as:

1. Development of practical skills in physics
2. Foundations of physics
3. Forces and motion
4. Electrons waves and photons
5. Newtonian world and astrophysics
6. Particles and medical physics

Teaching of practical skills is integrated with theoretical topics and they are both assessed through the written exam papers. For the practical endorsement, your class teachers will assess your practical skills in lessons, with a minimum of 12 practical activities to be carried out over the 2 years. At the end of the course, this will be reported separately to the exam grade as a pass or fail.

Course Entry Requirements

6 or above in GCSE Mathematics
6 or above in GCSE Physics or 7-6 or above in GCSE Combined Science

Course Specification

OCR H556

[Physics Specification link](#)



POLITICS – A LEVEL

Taught At

Hitchin Boys' School, Hitchin Girls' School and The Priory School

Course Overview

This course will encourage you to develop a critical awareness of the nature of politics and the relationship between political ideas, institutions and processes. You will acquire knowledge and understanding of the structures of authority and power within the political systems of the UK, EU and USA, plus an informed understanding of the rights and responsibilities of the individual.

Course Content

The course will be made up of 4 units. In Year 12 your studies will include UK political parties, pressure groups, electoral systems and referenda, UK parliamentary elections and voting behaviour in the UK, the constitution, the executive, the legislature, the judiciary and the European Union.

In year 13 you will study US Government and Politics including elections, presidential and congressional, political parties, pressure groups, the constitution, congress, the presidency, the Supreme Court and civil rights and liberties. Finally,

you will undertake a comparative unit comparing and contrasting different features of British and American politics and, where relevant, making connections to and comparisons with the political system of the European Union.

In addition to your timetabled lessons you will be expected to be alert to the course of events in the world of politics through newspapers, television and on the internet. All units are assessed by written examination

The study of politics provides a solid basis for those proceeding into higher education. The subject is well viewed by universities and is recognised as a sound base for further study in the arts, humanities and social sciences. It provides a capacity for analysis, an ability to communicate and an understanding of the decision-making process.

Course Entry Requirements

5 or above in English Language or Literature

Course Specification

Pearson 9PL0

[Politics Specification link](#)



PRODUCT DESIGN – A LEVEL

Taught At

Hitchin Boys' School, Hitchin Girls' School and The Priory School

Course Overview

This course will encourage you to take a broad view of Product Design, to develop your capacity to design and make products and to appreciate the complex relations between design, materials, manufacture and marketing. Product design encompasses a wide range of design disciplines but is firmly rooted in the skills required to design and make high quality products. Design studies will focus on the work of past designers, design movements of the 20th Century and contemporary design. The new specification will also draw upon your knowledge of Science and Mathematics

Course Content

Product Design at HGS

At HGS we will help you to develop a range of ICT skills using industry standard software (Photoshop, Illustrator and AutoDesk inventor) and practical skills in the workshop. You will choose a number of modules ranging from 3D products, packaging designs, promotional merchandise, branding, and environments through to architectural scale models of

buildings, to best suit your intended path into Design/Product Design/Engineering. A range of outcomes in year 12 that are fit for purpose, satisfy wants and needs, and enhance our daily lives, will demonstrate your creativity and growing ability, and will prepare you for the non-exam assessment (coursework) in year 13.

Product Design at HBS

At HBS the Product Design course will continue to develop the skills, knowledge and techniques in both designing and manufacturing, introducing new materials and client-centred iterative design methods in a range of design and make mini projects undertaken in our well-equipped workshops, with the focus on equipping you with the necessary skills to complete the major Non-Examined Assessment project in year 13 confidently and successfully. The course will be an ideal route to students who wish to study Product Design or a related subject, post 19 at college or university.

Product Design at TPS

At The Priory School you will learn a wide range of design and practical skills focusing around key design concepts and problem solving. You will also gain the theoretical knowledge of material properties, manufacturing processes and industrial techniques.

Projects will be centralised around a client and design need to help students transition smoothly onto creative higher education pathways. Year 12 will be taught through a range of mini projects and exam theory lessons to prepare you for both the non-examined assessment and 2 theory exams to be taken in Year 13.

To achieve success in Product Design, you will complete a portfolio of research and design work along with a working prototype for a client of your choosing. Your 2 exams will cover technical principles and design and making principles including; social, economic and environmental issues.

Course Entry Requirements

5 or above at GCSE

Course Specification

AQA 7552

[Product Design Specification link](#)

PSYCHOLOGY – A LEVEL

Taught At

Hitchin Boys' School, Hitchin Girls' School and The Priory School

Course Overview

The aim of this course is to gain an understanding of key topics and the knowledge and skills required in the academic study of psychology. This is done through looking at some of the main approaches in psychology – biological, cognitive, behavioural, psychodynamic and humanistic. You will be expected to take an active part in all lessons to fully develop your understanding.

You will learn about the origins of psychology and its emergence as a science. You will also learn about the structure and function of the nervous system and the role of hormones in human behaviour. You will gain an understanding of the research methods and data handling techniques used in psychology. You will also develop an understanding of ethical issues and carry out practical research activities.

All units are assessed by written examination.

Course Content

Paper 1: Introductory Topics in

Psychology:

Social Influence, Memory, Attachment and Psychopathology.

Paper 2: Psychology in Context:

Approaches in Psychology, Biopsychology and Research Methods.

Paper 3: Issues and Options in

Psychology:

Issues and Debates in Psychology plus three further topics from the following:

One from Relationships or Gender or Cognition and Development

One from Schizophrenia or Eating Behaviour or Stress

One from Aggression or Forensic Psychology or Addiction.

Studying psychology will help you gain a greater understanding of yourself and other people. You will better understand your interaction with others and increase your understanding of the causes of psychological disorders.

The focus on critical thinking and analysis of evidence make this A Level relevant to further study and careers in psychology, biological sciences, nursing & health, education, the police, human resources,

the prison service, sport, business, marketing, the media and more!

Course Entry Requirements

5 or above at GCSE

5-5 or above in Combined Science

5 or above in Mathematics at GCSE

5 or above in English Language or Literature at GCSE

Course Specification

AQA 7182

[Psychology Specification link](#)



SOCIOLOGY – A LEVEL

Taught At

Hitchin Boys' School, Hitchin Girls' School and The Priory School

Course Overview

During the course you will be encouraged to develop your own sociological awareness through active engagement with the contemporary world. Sociologists are interested in explaining why society works the way it does and the extent to which our behaviour, experiences and life chances are shaped by our social class, age, gender, ethnicity and locality. Those interested in the subject will want to understand the world in which they live – how and why it functions as it does and who has power and who does not.

Course Content

The subject is a two-year linear course which will enable you to demonstrate a wide range and depth of knowledge and understanding and develop skills of application, analysis, interpretation and evaluation.

The topics studied in the first year are education, research methods and your teachers will choose from a choice of topics including families and households, culture and identity, health and work or poverty and welfare.

In the second year theory, research methods and crime and deviance are compulsory and teachers again will choose from a choice of topics including beliefs in society, global development, the media or stratification and differentiation. All units are assessed by written examination.

Sociology is a well-respected academic discipline. The course will be excellent preparation for further study at university and is useful for a number of careers including law, teaching, social work, journalism, television, the police, nursing, the civil service as well as the world of business and commerce.

Course Entry Requirements

5 or above at GCSE
5 or above in English Language or Literature

Course Specification

AQA 7192

[Sociology Specification link](#)

Kaela, Head Student - HGS



I'm Kaela and I am the Head Girl at HGS this academic year, a responsibility that I am beyond grateful for. I am currently studying History, Sociology and Religious Studies for my A-Levels as they are all courses that I thoroughly enjoy and all enable me to develop useful skills such as essay writing and critical thinking.

Sixth Form as part of the Consortium has been a great experience for me as it has given me the chance to learn independently in study periods, whilst providing me with support and guidance from staff in my lessons.

The Consortium as a whole is a great way to be involved with the community through meeting new people, and also supplies a wide range of opportunities that help shape you into a well-rounded individual.

Advice that I would give to anyone making the transition into Sixth Form would be to choose subjects that you genuinely enjoy and take the opportunities that are presented to you - there is something for everyone.

SPANISH – A LEVEL

Taught At

Hitchin Boys' School, Hitchin Girls' School and The Priory School

Course Overview

Modern Foreign Languages are becoming increasingly important because of their ever-increasing relevance to the world of work. As well as providing a fascinating insight into other cultures, the course is designed to provide the opportunity to explore intellectually stimulating topics including social issues and current affairs.

Course Content

Building on GCSE, the course units focus on the following topic areas:

Year 12:

- Modern and Traditional Values
- Cyberspace
- Equal Rights
- Modern Day Idols
- Spanish Regional Identity
- Cultural Heritage

Year 13:

- Immigration, Racism, Integration
- "Today's Youth, Tomorrow's Citizens"
- Monarchies and Dictatorships
- Popular Movements.

In Paper 1 (50%) you are required to tackle listening and reading comprehension tasks that relate to these topics and to translate short passages from English into Spanish and Spanish into English.

In Paper 2 (20%) you are required to write about two novels, or a novel and a film, that you have studied during the course (texts/films would be selected by the teacher from the AQA prescribed list).

In Paper 3, the Speaking Exam, (30%), you will be expected to discuss issues relating to any of the topic areas listed and to talk about a personal area of research that you have undertaken in Year 13.

Language skills are increasingly sought by employers in a wide range of fields; indeed, many international companies expect competence in more than one foreign language. As far as the Consortium and universities are concerned, languages are compatible with almost any combination of support subjects, whether arts, sciences, or a mixture of both.

Course Entry Requirements

6 or above at GCSE in Spanish

Course Specification

AQA 7692

[Spanish Specification link](#)



SPORT – L3 BTEC

Taught At

Hitchin Boys' School

Course Overview

The course provides a broad basis of study for the sport sector and is designed for students who want to continue their education through applied learning and who aim to progress to higher education and ultimately to employment in the sport sector. The qualification is equivalent in size to one A Level.

Course Content

You will study three mandatory units, of which two will be externally assessed and one optional unit which is internally assessed. The three mandatory units are as follows:

Unit 1: Anatomy and Physiology

In this unit you will explore how the skeletal, muscular, cardiovascular and respiratory systems function and the fundamentals of the energy systems. This unit is externally assessed by examination.

Unit 2: Fitness Training and Programming for Health, Sport and Well-being

You will learn about client screening and lifestyle assessment, fitness training methods and fitness programming to

support improvements in a client's health and well-being. This unit is externally assessed by written submission.

Unit 3: Professional Development in the Sports Industry

In this unit you will look at the knowledge and skills required for different career pathways in the sports industry. You will take part in, and reflect on, a personal skills audit, career action plan and practical interview assessment activities. This unit is assessed by internal assignments.

Optional units will be selected by the school from the following:

- Sports Leadership
- Application of Fitness Testing
- Sports Psychology
- Practical Sports Performance

BTEC Sport combines well with a large number of subjects and supports entry to higher education courses in a very wide range of disciplines.

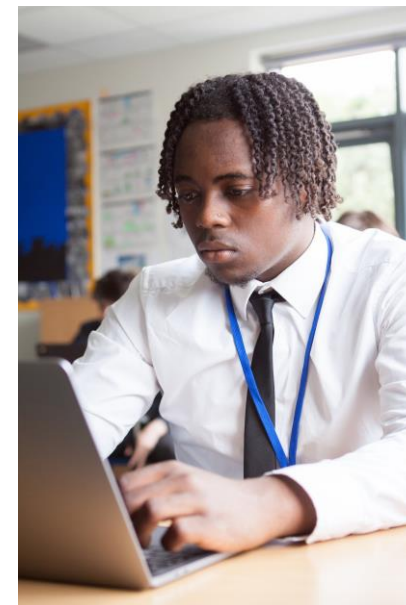
Course Entry Requirements

Merit at L2 Sport or Grade 5 in PE at GCSE.

Course Specification

Pearson BTEC Level 3 National Extended Certificate in Sport.

[BTEC Sport Specification link](#)



TRAVEL & TOURISM – L3 BTEC

Taught At

The Priory School

Course Overview

This qualification gives a broad introduction to the travel and tourism industry, with an emphasis on core knowledge and fundamental skills that are transferable across other sectors.

The content of this qualification has been developed in consultation with higher education providers to ensure that it supports this progression. In addition, employers and professional bodies have been involved and consulted in order to confirm that the content is appropriate and consistent with current practice.

Course Content

This qualification includes three mandatory units covering the following content areas:

- The world of travel and tourism: the travel and tourism industry in the UK is growing and is of major importance to the economy. You will develop the skills needed to examine, interpret and analyse a variety of statistics that measure the importance of tourism to the UK.

- Global destinations:- Different types of destinations and their importance – you will investigate the features and appeal of global destinations.
- Principles of marketing in travel and tourism: – you will explore how to develop a successful marketing plan for use by travel and tourism organisations to attract and engage with customers using research data.

In addition, you will study a fourth unit chosen from either visitor attractions or events, conferences and exhibitions.

Unit 1 - The world of travel and tourism is assessed through an externally set exam lasting 1 ½ hours. Unit 2 Global destinations, is also externally assessed through a 3 hour task set by Pearson. The remaining two units are assessed through coursework assignments.

Course Entry Requirements

Standard Entry Requirements.

Course Specification

Pearson BTEC L3 National Extended Certificate in Travel and Tourism

[Travel and Tourism specification](#)

Kirsty, Deputy Head Student - TPS



I study biology, chemistry and maths as well as completing an EPQ last year and I hope to undertake a degree in paramedical science. Sixth form has taught me not only academic but plenty of interpersonal skills, as well as how to stay optimistic despite the challenges you may face. I'm so proud to be representing my school and the consortium as one of the deputy head students for this year. Whilst the subjects I chose were the most suitable for my career, my advice to any prospective students would be to choose subjects you enjoy, even if you don't have a fixed plan for afterwards. Never underestimate how much can change in a short space of time because the possibilities are endless. Take advantage of every opportunity available to you and allow yourself to over-learn for the best understanding in your subjects and your career ambitions. After being diagnosed with dyslexia this year, I've been able to understand and adapt my way of learning so I can absorb information suited to me - my confidence in maths and biology has grown so much. Sixth form is an inviting, open, network where every student has the ability to achieve and succeed with the right effort and mindset and has helped me towards my future career goals

ENRICHMENT

Core Maths

Course Overview

This Core Maths qualification is designed to better prepare you for the mathematical demands of study, employment and life. It will develop your ability to think mathematically, logically and analytically and will build skills in applying maths to new problems and issues.

The course has been developed with employers, universities and professional bodies as valuable preparation for university study and employment.

Core Maths will maintain and develop your real-life mathematical skills. The study is not purely theoretical or abstract, it can be applied on a day-to-day basis in work, study or life and includes a financial mathematics element.

The Core Maths initiative is a major part of the government's plan to increase participation and raise standards in mathematics.

Studying Core Maths will also support other A-Level subjects – in particular with science, geography, business studies, product design, psychology and economics.

Course Content

Paper 1: Compulsory Content

- Analysis of Data
- Maths for personal finance
- Estimation
- Critical analysis of given data and models (including spreadsheets and tabular data).

Paper 2: Optional Content

- The normal distribution
- Probabilities and estimation
- Correlation and regression

or

- Critical path analysis
- Expectation and cost benefit analysis

or

- Graphical methods
- Rates of change
- Exponential functions

This Level 3 qualification is distinct from A Level Mathematics and it should be taken alongside your main programme of study. It equates to half an A Level.

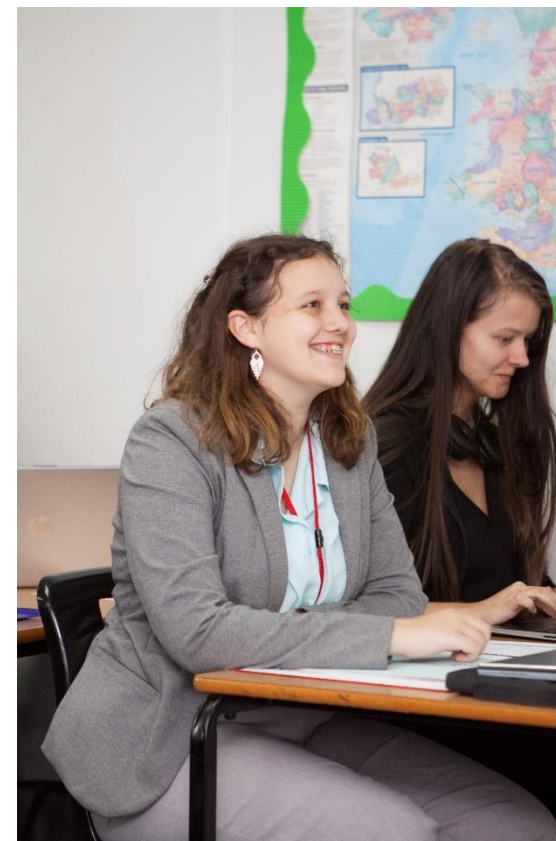
Course Entry Requirements

5 or above in GCSE Mathematics

Course Specification

AQA Level 3 Mathematical Studies

[Core Maths Specification link](#)



ENRICHMENT

Extended Project Qualification (EPQ)

The Level 3 Extended Project offers you a free project choice so you can explore in depth an aspect of a subject you are studying or a topic in which you have a personal interest. It is worth up to 28 UCAS points.

The EPQ will help you develop and improve your critical, reflective and independent learning and to apply your decision-making and problem solving skills. You will need to utilise and extend your skills in planning, research, analysis, synthesis, evaluation and presentation. You will need to apply all these skills creatively and demonstrate initiative and enterprise.

You will be assigned to a staff mentor/supervisor who will deliver the taught element of the project to include project management skills, research and presentation techniques, and methods of evaluation and analysis. These sessions may be teacher-led or include group discussion and feedback between peers.

There are four assessment objectives: Manage; Use Resources; Develop and Realise; and Review.

The Project can take a variety of forms i.e. dissertation, investigation, artefact, performance or design. The final outcome needs to be accompanied by a written component and presentation. The Project will be internally assessed and externally moderated on the skills demonstrated throughout the whole process.

The Extended Project Qualification will be a valuable addition to your studies if you are considering making an Oxbridge/ Medicine application, applying for a highly competitive undergraduate degree course or if you have a particular area of interest that you would like to develop further.

Course specification:

OCR H857 (HGS)

[OCR EPQ Specification link](#)

AQA 7993 (TPS & HBS)

[AQA EPQ Specification link](#)



ENRICHMENT

Sports Leaders

There are opportunities within the Consortium to take a Level 2 Qualification in Community Sports Leadership or a Level 3 Qualification in Sports Leadership, having previously completed the Level 2 award. Both are enrichment qualifications which are awarded by Sports Leaders UK.

COMMUNITY SPORTS LEADERSHIP L2 Award

This qualification enables you to lead groups of people in sport/activity, under indirect supervision. You will learn leadership skills such as organisation, planning, communication, observation, evaluation and teamwork through the medium of sport within the community. It is a fun and practical qualification with no entrance requirements or final examinations to sit.

The two and half term course will cover 4 units. They are developing leadership skills, planning, leading and evaluating activity sessions, organising sports events, leading sport or activity within school or the community.

You will be assessed by the tutor, completing 10 hours of voluntary service and achieving and producing evidence for the assessment criteria for each unit.

HIGHER SPORTS LEADERSHIP L3 Certificate

This qualification enables you to lead unsupervised groups of people in sport and recreational activities. It teaches generic leadership skills such as organisation, planning, communication and teamwork. To access the course you must have completed a L2 Award. Units covered are:

- Unit 1 – Developing leadership skills
- Unit 2 – Plan, lead and evaluate a sports/physical activity event
- Unit 3 – Lead safe sport/physical activity sessions
- Unit 4 – Plan, lead and evaluate sport/physical activity sessions for children
- Unit 5 – Plan, lead and evaluate sport/physical activity sessions in the community (optional unit)
- Unit 6 - Plan, lead and evaluate sport/physical activity sessions for disabled people (optional unit)
- Unit 7 - Lead sport/activity sessions for older people (optional unit)

In order for you to complete your Level 3 Certificate you must complete 30 hours demonstration of leadership. These must be 10 hours in the mandatory unit 4 and two from the three optional units. There are no final examinations to sit and the course is a mixture of practical and classroom lessons. The award is worth 16 UCAS points.

[Level 2 Specification link](#)

[Level 3 Specification link](#)



DELIVERY OF COURSES

Course Title	HBS	HGS	TPS	Course Title	HBS	HGS	TPS
Art and Design	✓	✓	✓	Health & Social Care BTEC/Technical		✓	✓
Biology	✓	✓	✓	History	✓	✓	✓
Business	✓	✓		ICT BTEC	✓		
Business BTEC	✓		✓	Investigative Science BTEC	✓		
Chemistry	✓	✓	✓	Latin		✓	
Classical Civilisation		✓		Mathematics & Further Mathematics	✓	✓	✓
Computer Science	✓	✓	✓	Media Studies	✓	✓	✓
Core Maths			✓	Music	✓	✓	✓
Criminology			✓	Music Performance/Sound Engineering BTEC			✓
Digital Media			✓	Performing Arts BTEC			✓
Drama & Theatre	✓	✓		Philosophy & Ethics	✓	✓	✓
Economics	✓		✓	Photography	✓	✓	
English Language & Literature		✓	✓	Physical Education	✓	✓	✓
English Literature	✓	✓	✓	Physics	✓	✓	✓
Extended Project Qualification (EPQ)	✓	✓	✓	Politics	✓	✓	
Fashion & Textiles		✓		Product Design	✓	✓	✓
Film Studies			✓	Psychology	✓	✓	✓
Food Science & Nutrition	✓	✓		Sociology	✓	✓	✓
Forensic & Criminal Investigation BTEC	✓			Spanish	✓	✓	✓
French	✓	✓	✓	Sports Leaders	✓	✓	
Geography	✓	✓	✓	Sport BTEC	✓		
German	✓			Travel & Tourism BTEC			✓

✓ = Provisional delivery by school(s) indicated. Teaching will be shared for some subjects by at least two schools.

ENTRY REQUIREMENTS

Hitchin Sixth Form Consortium - 2023 Entry Requirements

Standard entry requirement for the Hitchin Sixth Form Consortium is five Grade 9-4 GCSEs or equivalent including English and Maths at Grade 4 or above. Most subjects will have additional entry requirements and all have a recommended GCSE Average Points Score (APS), this GCSE APS can be used as a guide when looking at post-16 choices.

The APS numbers in the table below are the recommended minimum requirement for entry to the course. Using national averages as a guideline, students achieving only the stated APS at GCSE can expect to achieve at least a low D grade at A-level in those subject areas. For Level 3 BTEC/Technical courses the expected minimum outcome with the APS shown would be a Merit grade.

Subject	APS	Additional GCSE Entry Requirements
Art & Design	3.75	Grade 5 in Art at GCSE*.
Biology	5	Grade 6 in Biology or Grade 7-6 in Combined Science. Grade 6 in Mathematics
Business	4	Grade 5 in Business at GCSE*
Chemistry	5	Grade 6 in Chemistry or Grade 7-6 in Combined Science. Grade 6 in Mathematics
Classical Civilisation	4	Standard entry requirements.
Computer Science	4.5	Grade 6 in Mathematics. Grade 5 in Computer Science at GCSE*
Drama & Theatre Studies	4	Grade 5 in Drama at GCSE*
Economics	4.5	Grade 6 in Mathematics
English Language & Literature	4.5	Grade 5 in English Language or Literature
English Literature	4.5	Grade 5 in English Literature
Fashion & Textiles	4	Grade 5 in Design & Technology at GCSE*
Film Studies	4.5	Grade 5 in English Language or Literature
French	4.5	Grade 6 in French
Geography	4.5	Grade 5 in Geography at GCSE* Grade 5 in Mathematics
German	4.5	Grade 6 in German
History	4.5	Grade 5 in History at GCSE*. Grade 5 in English Language or Literature
L3 BTEC in Business	3.5	Standard entry requirements.
L3 Applied Diploma – Criminology	3.5	Standard entry requirements.
L3 Technical Digital Media	3.5	Grade 5 in English Language or Literature

Subject	APS	Additional GCSE Entry Requirements
L3 Diploma Food Science and Nutrition	3.5	Grade 5 in Food Technology at GCSE*
L3 BTEC/Technical Health & Social Care	3.5	Standard entry requirements
L3 BTEC Investigative or Forensic Science	3.5	Grade 5 in Mathematics. Grade 5 in Sciences or 5-5 in Combined Science
L3 BTEC in IT	3.5	Grade 4 in ICT at GCSE*
L3 BTEC in Music Performance	3.5	Merit in Music Production or Technology at Level 2*
L3 BTEC in Music Tech (Sound Engineering)	3.5	Merit in Music Production or Technology at Level 2*
L3 BTEC Performing Arts (Acting)	3.5	Merit in Performing Arts at Level 2*
L3 BTEC Sport	3.5	Merit in Sport at Level 2 or Grade 5 in PE at GCSE*
L3 BTEC Travel & Tourism	3.5	Standard entry requirements
Latin	4.5	Grade 6 in Latin
Mathematics	4.5	Grade 7 in Mathematics
Mathematics – Further	4.5	Grade 8 in Mathematics
Media Studies	4	Grade 5 in Media Studies at GCSE or Grade 5 in English Language or Literature
Music	4	Grade 6 in Music at GCSE*
Philosophy & Ethics	4.5	Grade 5 in Philosophy & Ethics at GCSE or Grade 5 in English Language or Literature
Photography	3.75	Grade 5 in Art Photography at GCSE*
Physical Education	4	Grade 5 in PE at GCSE* Grade 5-5 in Combined Science
Physics	5	Grade 6 in Physics or Grade 7-6 in Combined Science. Grade 6 in Mathematics.
Politics	4.5	Grade 5 in English Language or Literature
Product Design	4	Grade 5 in Design & Technology at GCSE*
Psychology	4.5	Grade 5-5 in Combined Science. Grade 5 in Mathematics and Grade 5 in English Language or Literature.
Sociology	4	Grade 5 in Sociology at GCSE*. Grade 5 in English Language or Literature
Spanish	4.5	Grade 6 in Spanish at GCSE*

*If you have not taken a subject at GCSE, it may in some instances still be possible to take the A level course even if there is a minimum GCSE grade in the entry requirements. You should discuss this with your Head of Sixth Form and be prepared to undertake additional preparation or bridging project as directed by each department.

CONTACT DETAILS

We hope that you found the information contained in the Prospectus useful. Further information is available from the school websites and from the Head of Sixth Form at each school.

Hitchin Boys' School

Hitchin Boys' School
Grammar School Walk
Hitchin SG5 1JB
01462 432181

Headteacher: Mr F Moane
Head of Sixth: Mrs E Christou

www.hbs.herts.sch.uk

The Priory School

The Priory School
Bedford Road
Hitchin SG5 2UR
01462 622300

Headteacher: Mr G Edwards
Head of Sixth: Mrs S Hadaway

www.priory.herts.sch.uk

Hitchin Girls' School

Hitchin Girls' School
Highbury Road
Hitchin SG4 9RS
01462 621300

Headteacher: Mr J Crowther
Head of Sixth: Miss T Stojko

www.hgs.herts.sch.uk

Hitchin 14-19 Consortium Co-ordinator

Ms E Leigh
Tel: 01462 621300 ext. 4855



Hitchin Girls' School
Highbury Road
Hitchin SG4 9RS
01462 621300

Headteacher: Mr J Crowther
Head of Sixth: Miss T Stojko



The Priory School
Bedford Road
Hitchin SG5 2UR
01462 622300

Headteacher: Mr G Edwards
Head of Sixth: Mrs S Hadaway



Hitchin Boys' School
Grammer School Walk
Hitchin SG5 1JB
01462 432181

Headteacher: Mr F Moane
Head of Sixth: Mrs E Christou